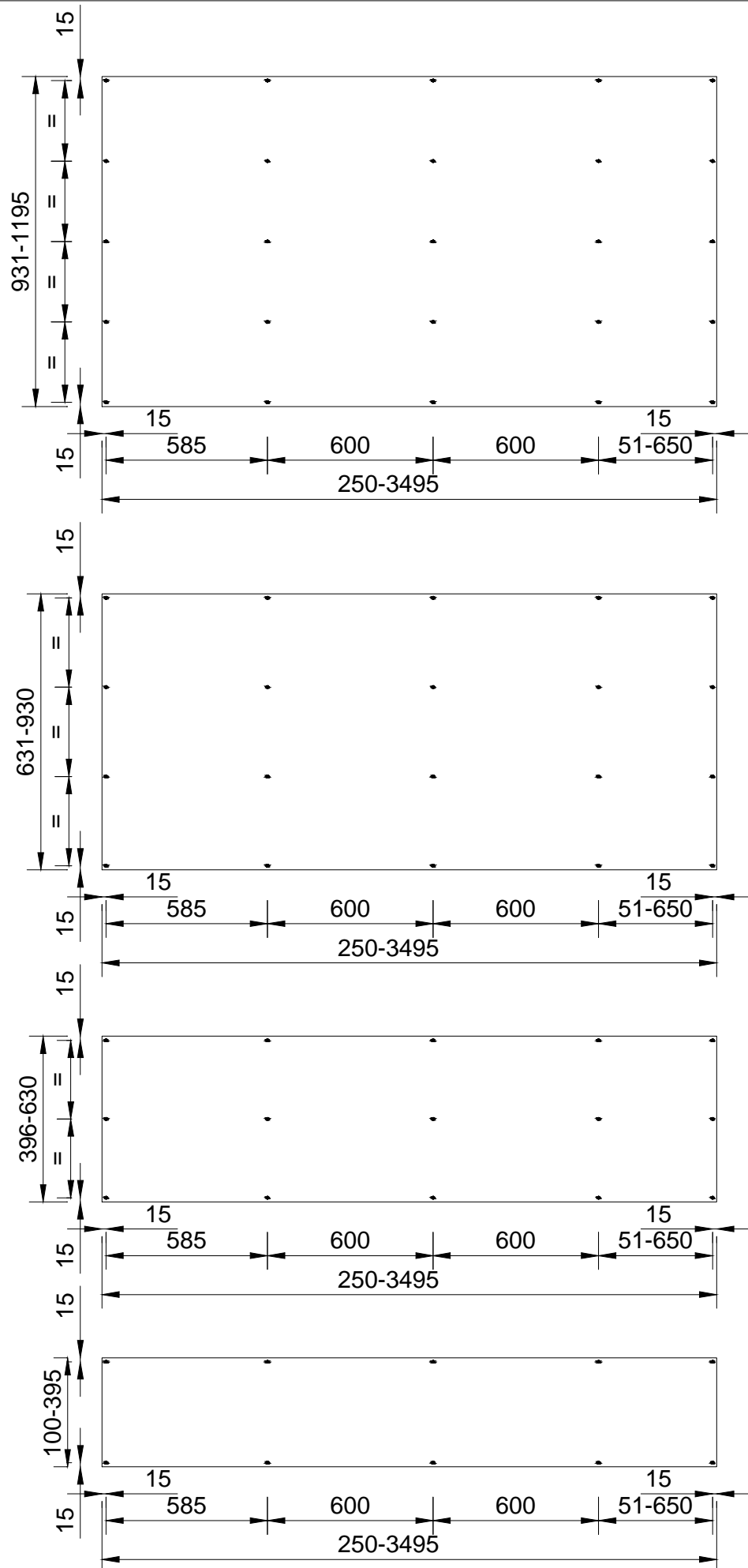


CH01A.

Steni Colour

Horizontal fixing, c.2.c 600mm

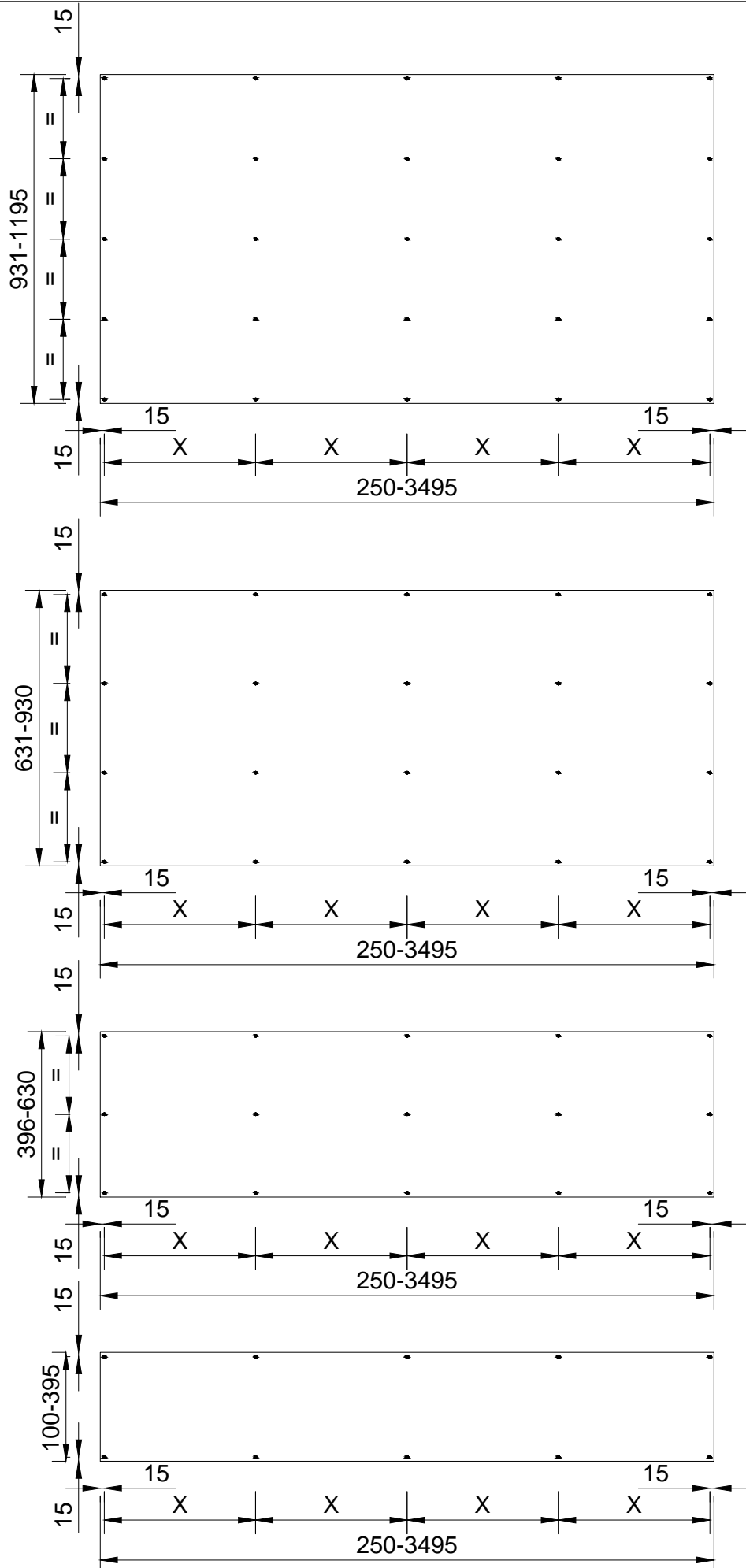


CH03A.

Steni Colour

Horizontal fixing, $X \approx 600\text{mm}$. Max. 600mm

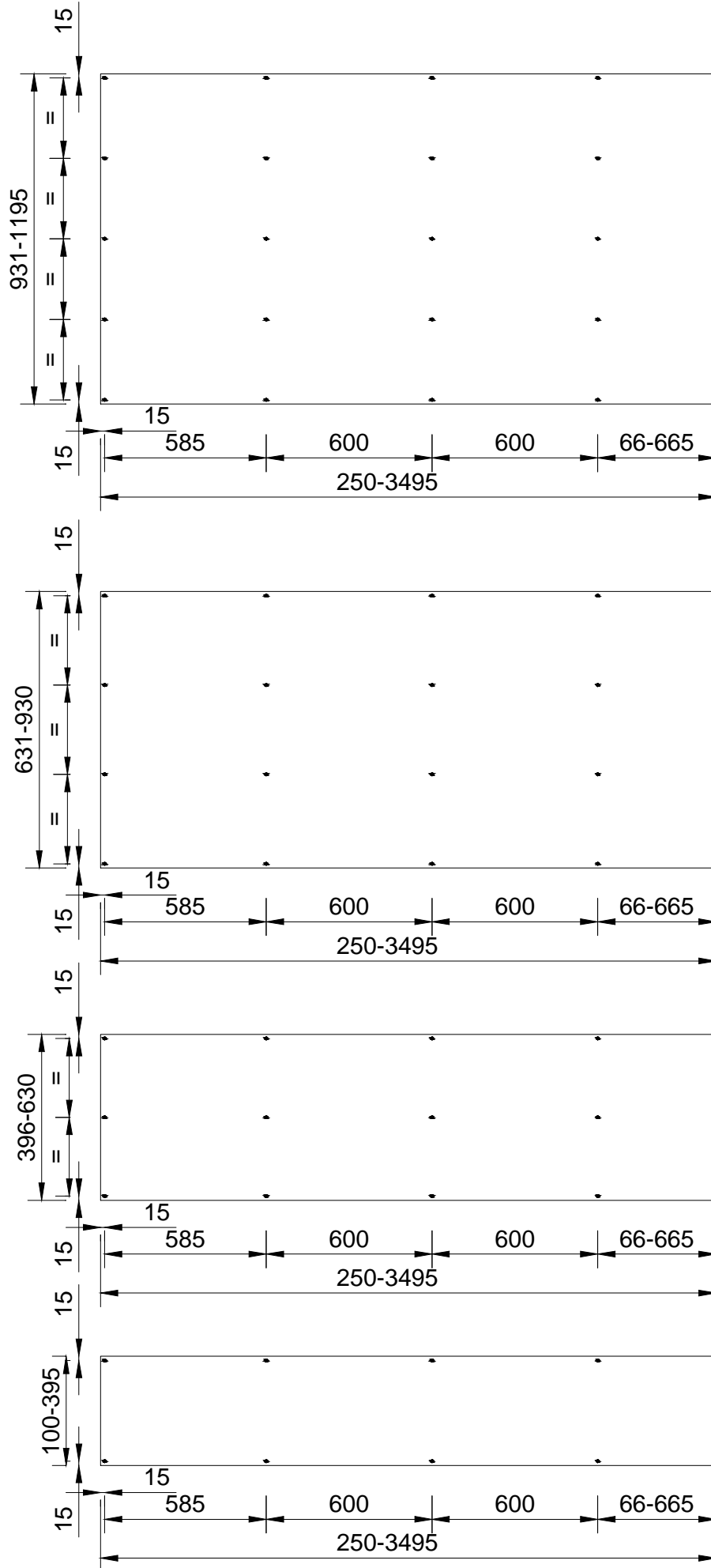
(exs. length $1980\text{mm} = 1980 - 15 - 15 / 600 = 3,25$ round up to 4 hole, $1980 - 15 - 15 / 4$, $X = 487,5\text{mm}$)



CH05A.

Steni Colour

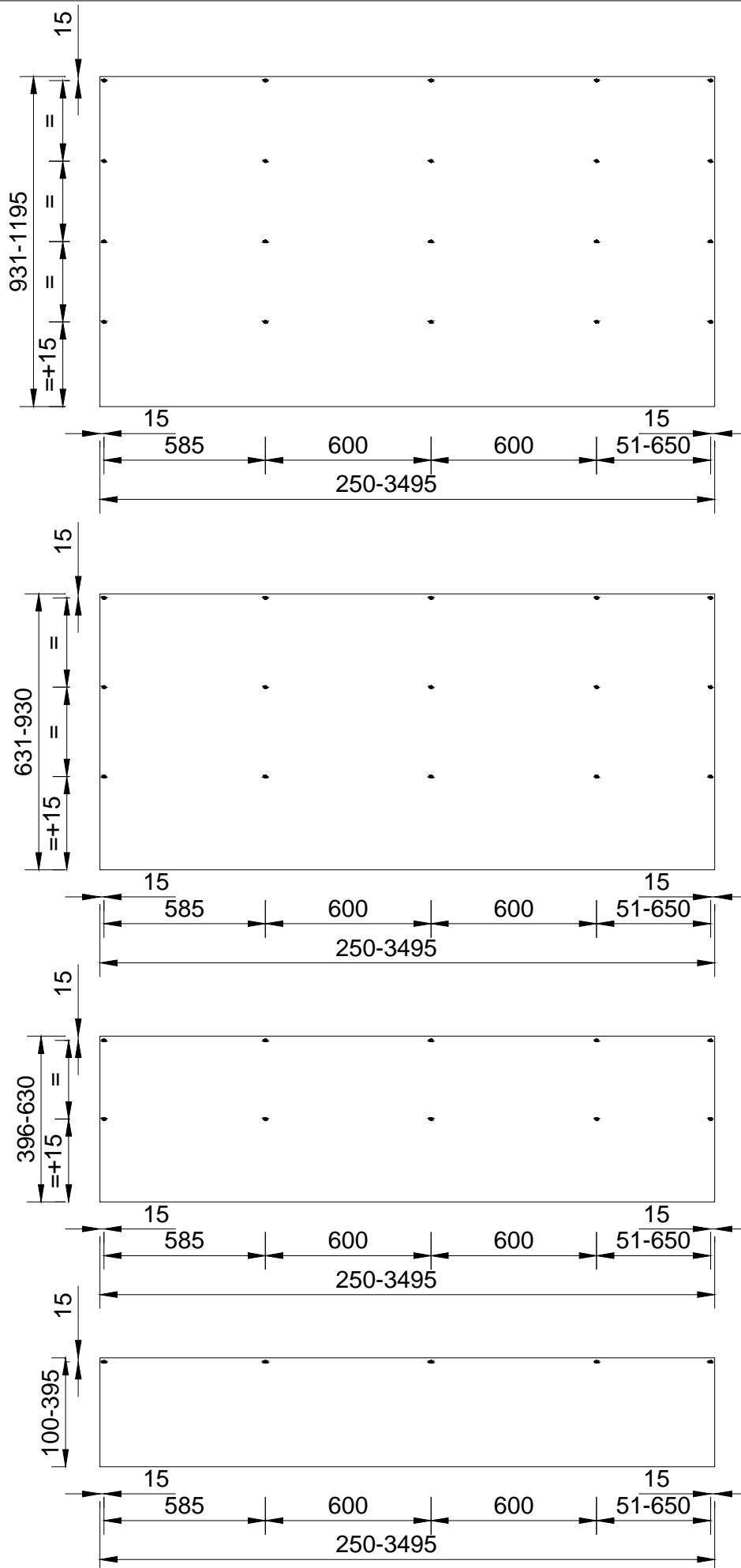
Horizontal fixing, c.2.c 600mm (CH01A without right edge drilling)



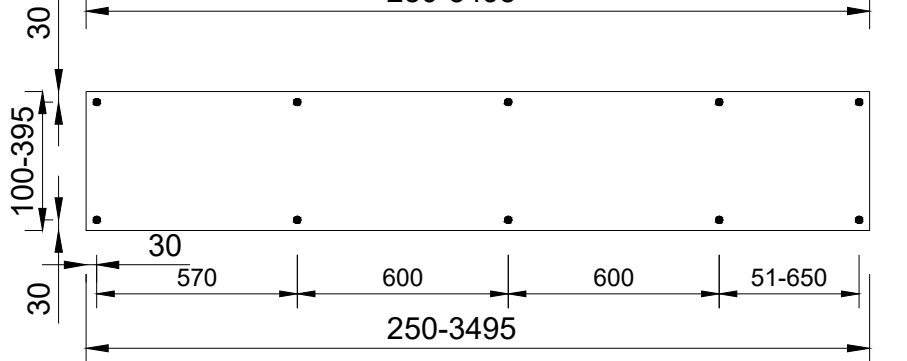
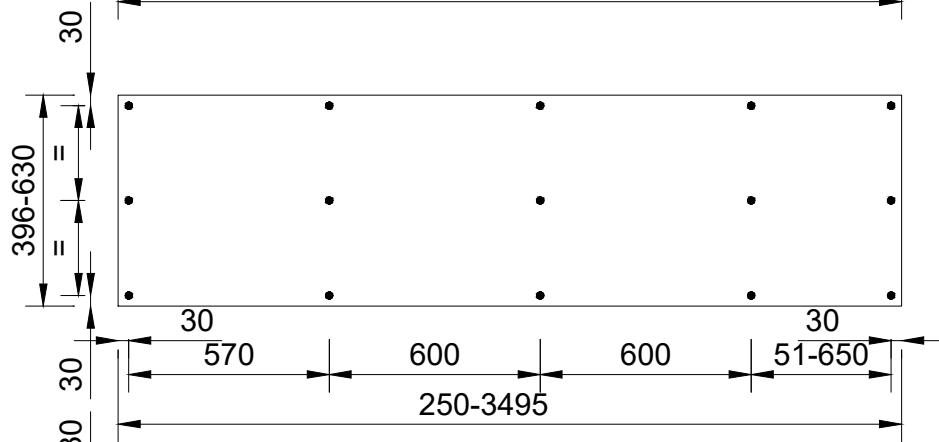
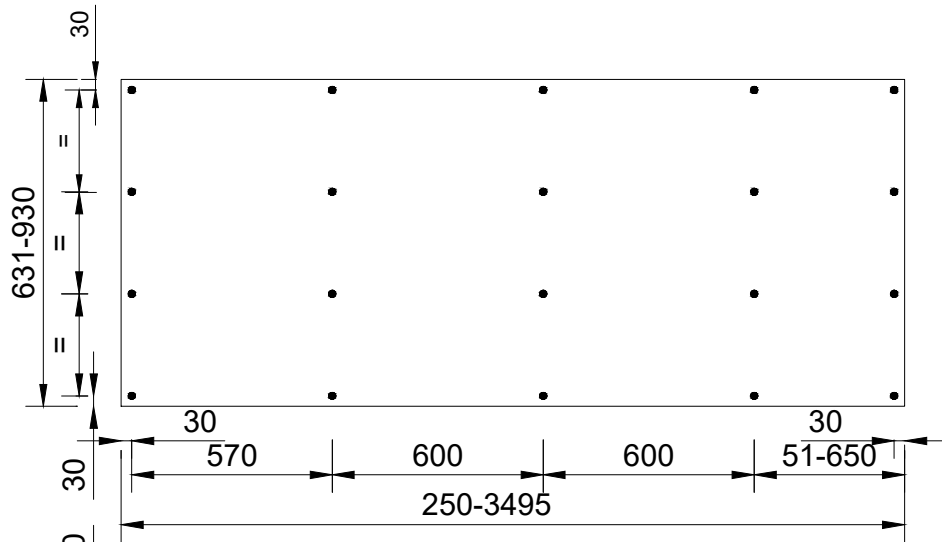
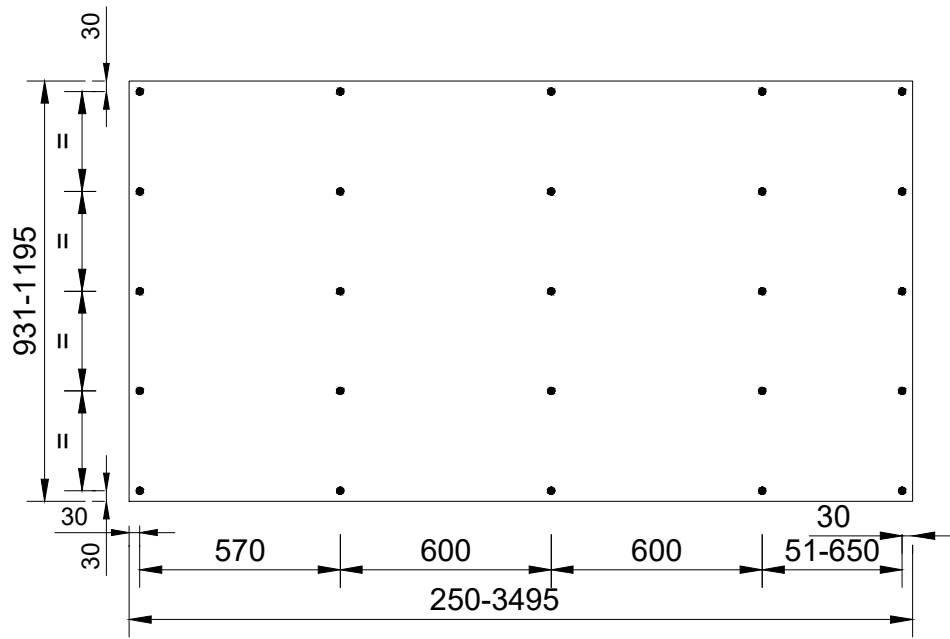
CH13A.

Steni Colour

Horizontal fixing, c.2.c 600mm (CH01A without bottom side drilled)



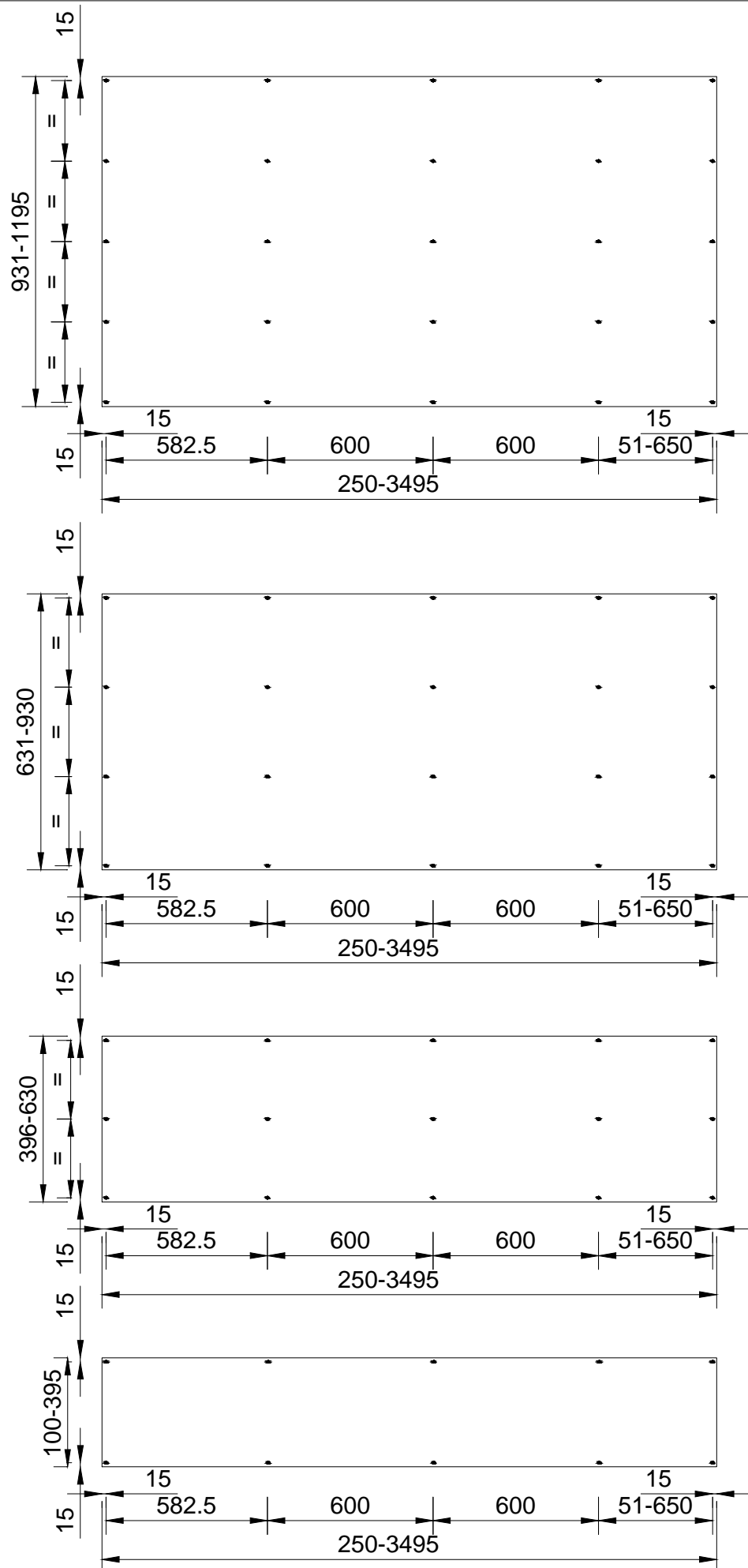
Horizontal fixing, c.2.c 600mm, with 30mm sides and edges distance



CH20A.

Steni Colour

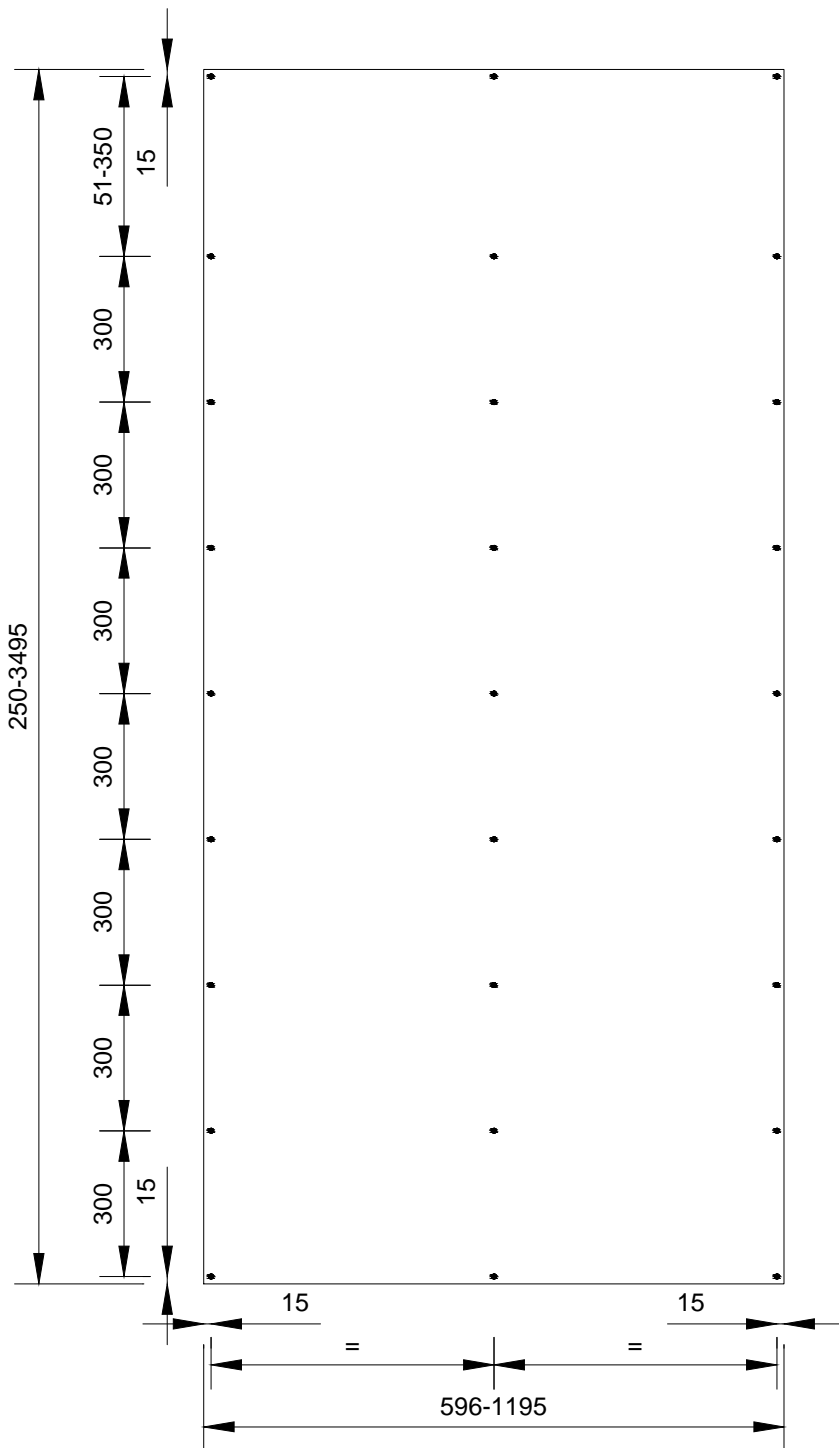
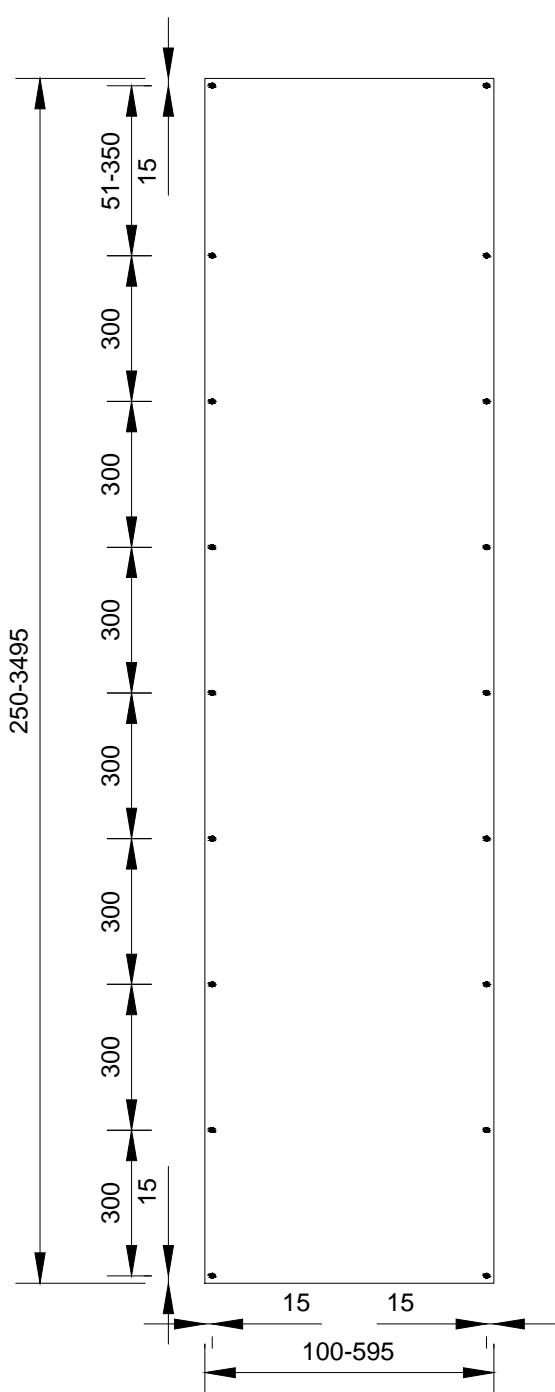
Horizontal fixing, c.2.c 600mm (CH01A with 2.5mm offset first hole)



CV02A.

Steni Colour

Vertical fixing, c.2.c 300mm

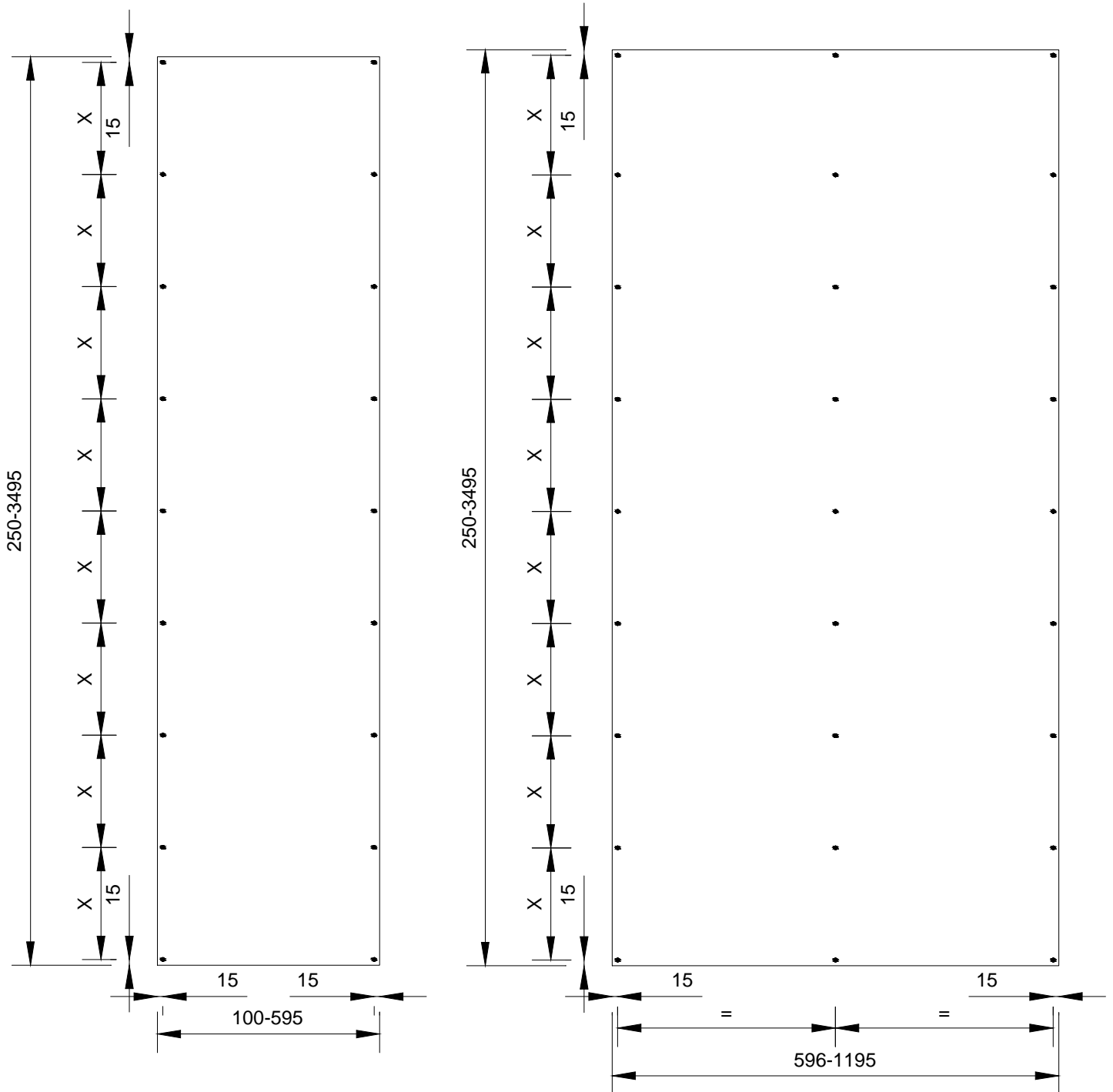


CV03A.

Steni Colour

Vertical fixing, $X \approx 300\text{mm}$. Max. 300mm

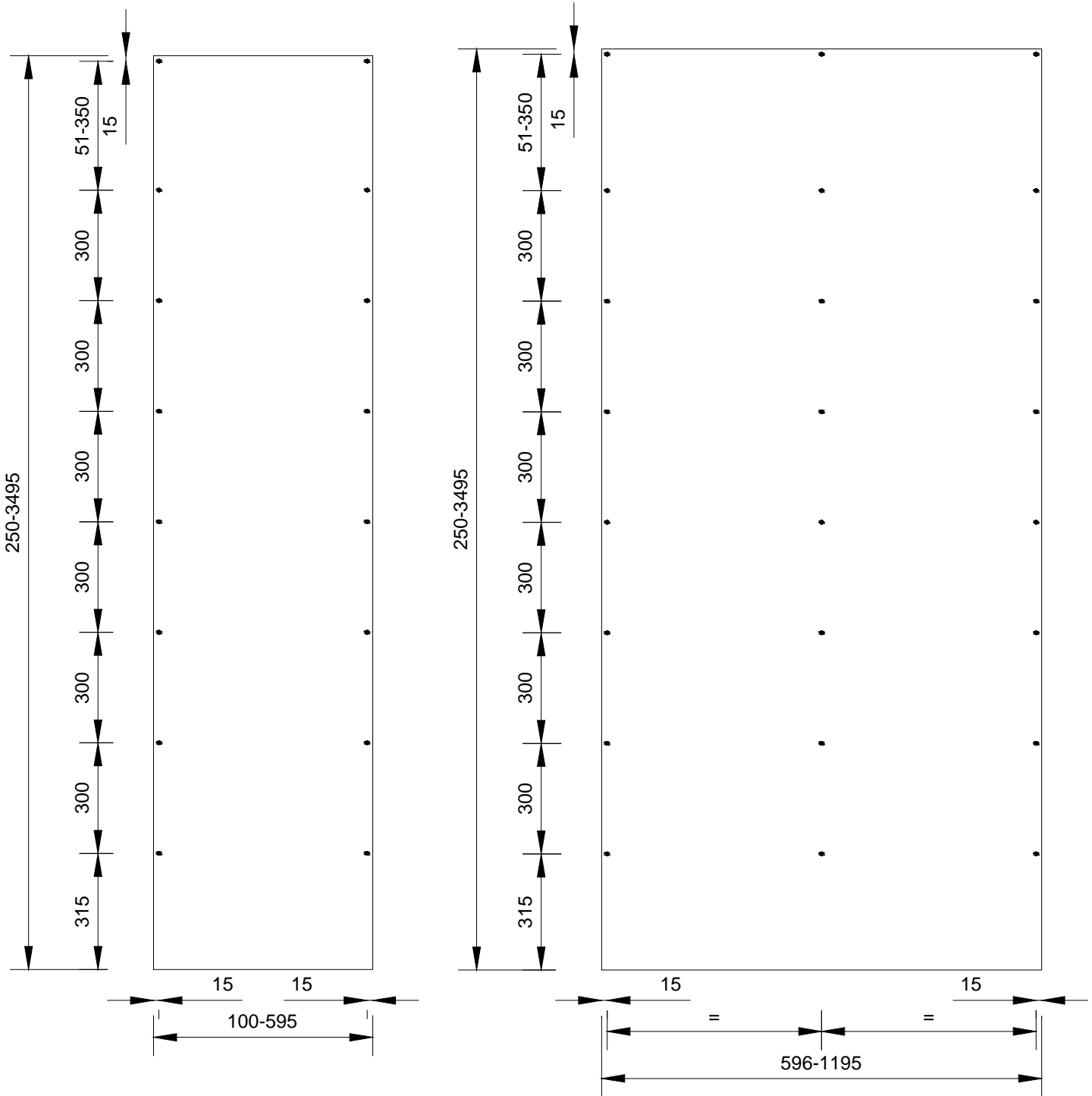
(exs. length 1980mm = $1980 - 15 - 15 / 300 = 6,5$ round up to 7 hole, $1980 - 15 - 15 / 7$, $X = 278,5\text{mm}$)



CV04A.

Steni Colour

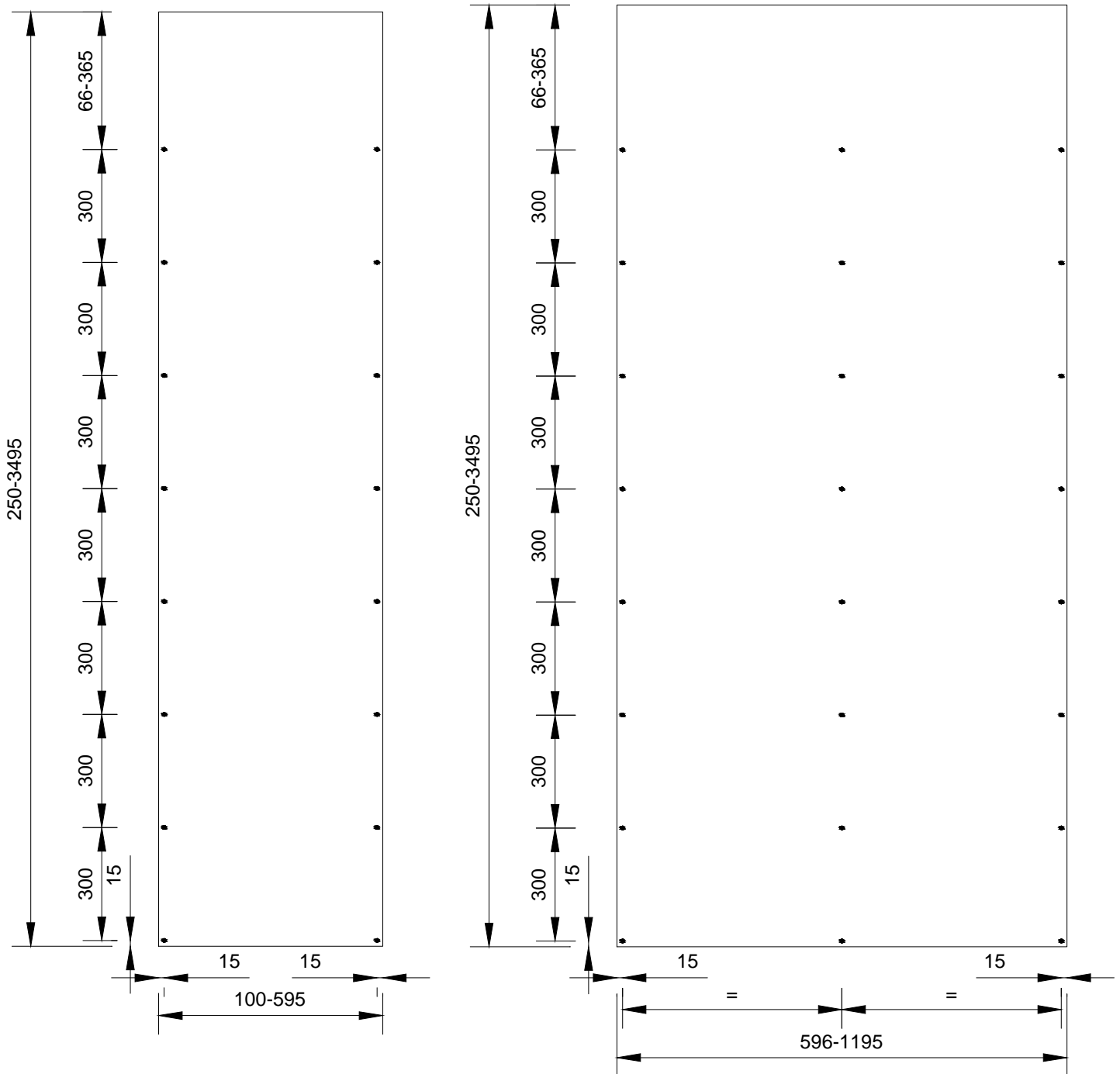
Vertical fixing, c.2.c 300mm (CV02A without bottom rows drilled)



CV05A.

Steni Colour

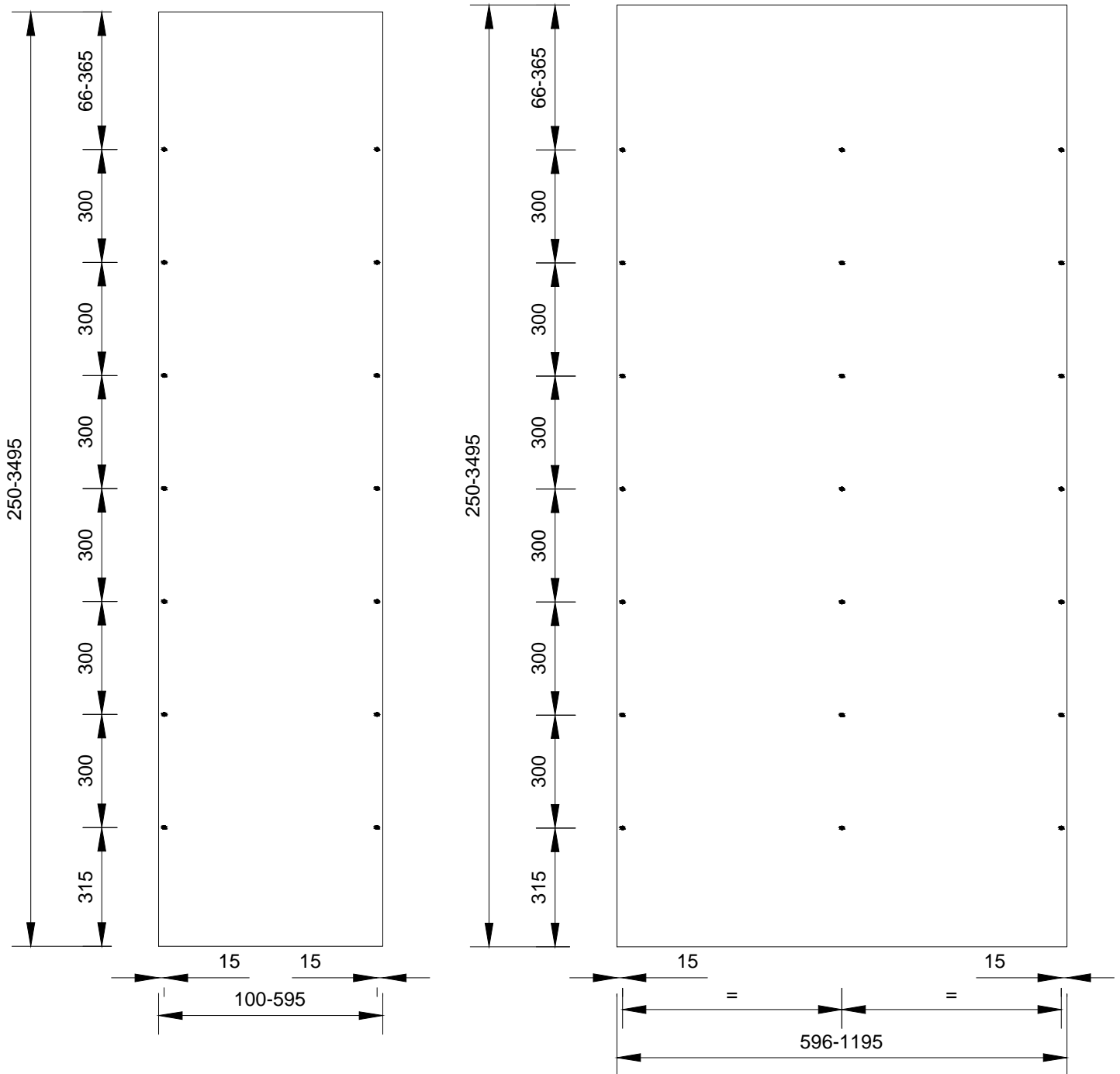
Vertical fixing, c.2.c 300mm (CV02A without top rows drilled)



CV06A.

Steni Colour

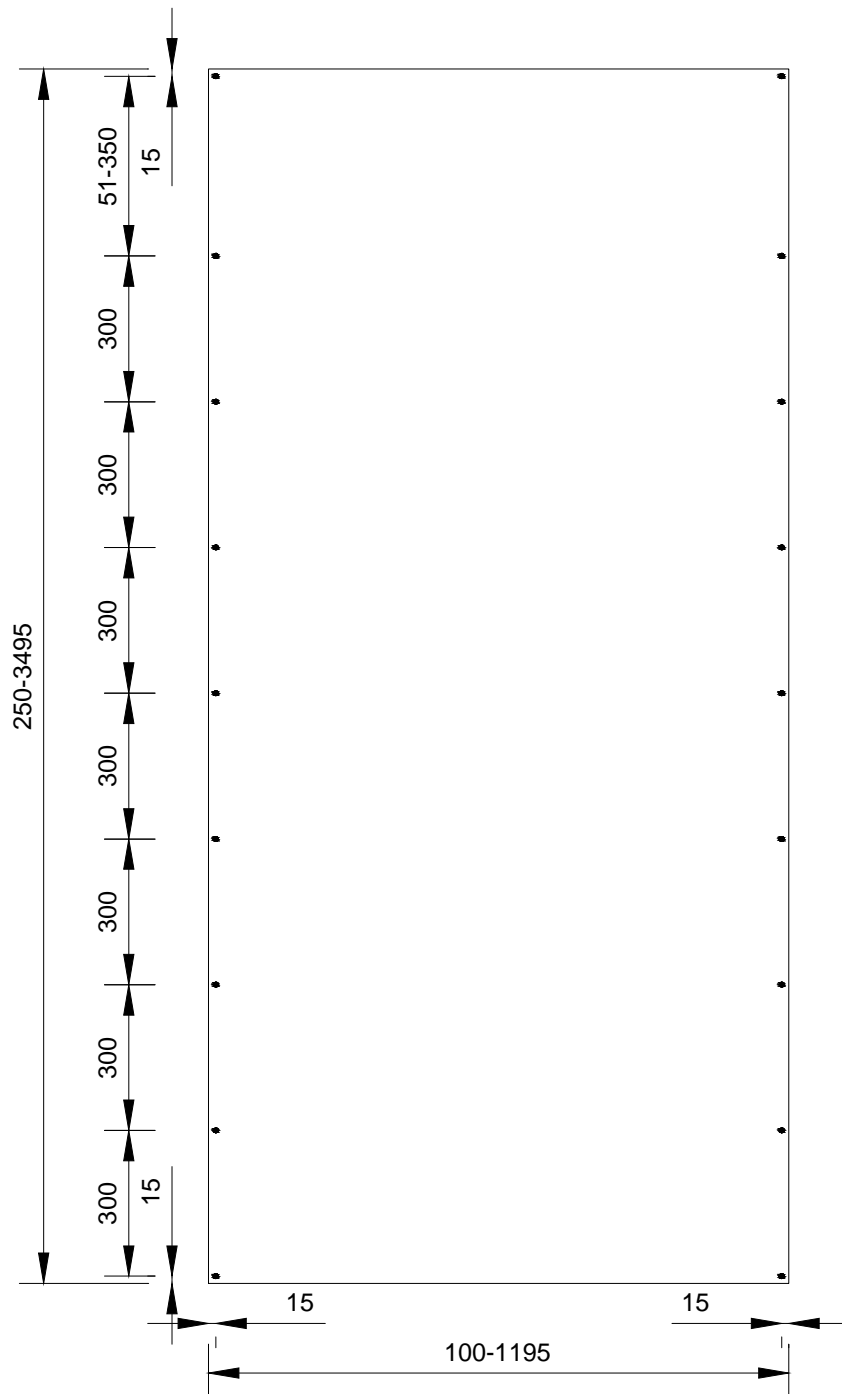
Vertical fixing, c.2.c 300mm (CV02A without top and bottom rows drilled)



CV16A.

Steni Colour

Vertical fixing, c.2.c 300mm (CV02A without center drilled)



CV25A.

Steni Colour

Vertical fixing, $X \approx 300\text{mm}$. Max. 300mm
(CV03A with 30mm edge and side distance)

