

STENI® - LASTING EXPRESSIONS



FAÇADES:

60^Y OUTSTANDING DURABILITY

🔄 LOW LIFE CYCLE COST

💧 EASE OF MAINTENANCE

COLOUR

GLOSS



TEXTURE

PRINT

MORE THAN A FAÇADE PANEL

Steni's high-quality façade solutions will give your building a unique and enduring architectural expression. The panels are made of fibreglass reinforced polymer composite, designed to handle harsh and demanding environments.

Steni was established as a family-owned company in 1965. Today, the majority shareholder is Accentone 2012 Holding Ltd. Steni's head office, production plant and warehouse are situated in Lardal, in the county of Vestfold in Norway.

Steni has sales companies in Norway, Sweden, Denmark and Finland, and another for the Benelux countries. Steni has agreements with distributors for the sale and marketing of our façade panels in the rest of Europe, the United States and Canada.

FACTS

Established in 1965
Majority shareholder Accentone 2012 Holding Ltd
High-quality façade panels of polymer composite
Head office and production plant in Vestfold, Norway
International company
Approx. 110 employees

DESIGNED AND MANUFACTURED IN SCANDINAVIA

For more info visit steni.com

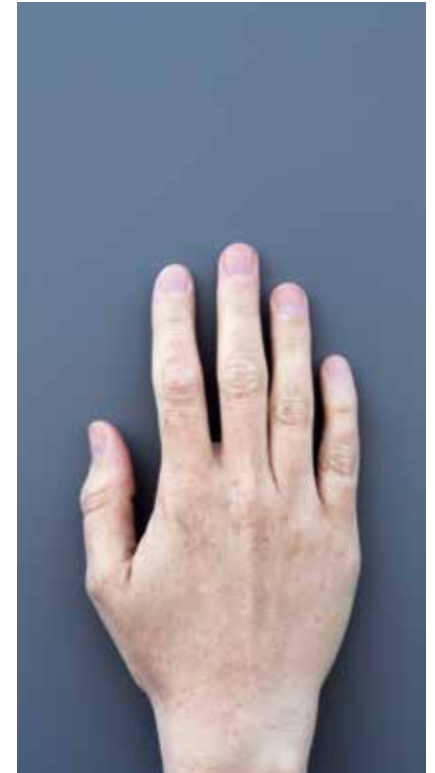


12
FAÇADE PANELS
THAT PAY OFF
Price is not just
purchase price.



6
LOW GLOBAL
ENVIRONMENTAL IMPACT
Continuous improvement of
our carbon footprint.

4
ONE CORE -
MANY SURFACES
The core is the same, but you
can play with the surfaces.



CONTENTS



16
PLAY WITH COLOUR
Infuse your building with
your own personal style.



24
YOUR OWN UNIQUE FAÇADE
You are only limited
by your imagination.



34
A NATURAL EXPRESSION
With a surface of
crushed natural stone.

STENI FAÇADE PANELS

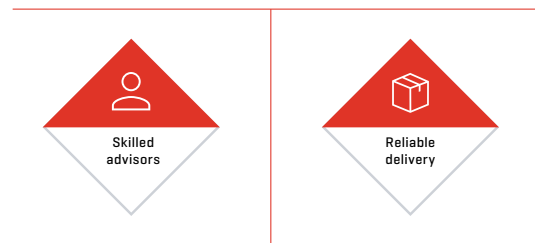
ONE CORE – MANY SURFACES

With Steni façade panels, you can infuse the building with your own personal style. You can play with surfaces, colours, prints and colour combinations.

All of Steni's façade panels are fibreglass-reinforced polymer composite panels with a core of crushed limestone. Together, the combination of materials with different properties produces an extremely strong and durable final product. Polymer composite is increasingly being used in the production of automobiles, boats and aircraft. It is also becoming more and more popular for products that are exposed to extreme stress.

All façade panels from Steni have a 60-year functional warranty. They can be installed at any time of year, regardless of temperature and weather conditions. The panels are frost and moisture resistant and can be immersed in water for long periods without damage.

Steni façade panels have a low CO₂ footprint, are colourfast and require minimal maintenance.



COLLABORATION PARTNER

When you enter into a partnership with Steni, we can offer many services that will simplify all your project work. As your partner, we can offer consultancy and technical services, as well as good logistics support, all the way from the planning phase to daily operations. We have sales representatives in several markets, and we will gladly participate in construction meetings and start-up meetings.



STENI COLOUR

Steni Colour façade panels have a smooth surface of electron beam cured acrylic. You can choose from 60 standard colours and three gloss levels, or select a custom colour based on NCS or RAL.



STENI VISION

Steni Vision façade panels have a smooth, printed surface of electron beam cured acrylic. Your design and decoration options are almost limitless: use your own photos, illustrations and/or other motifs.



STENI NATURE

Steni Nature façade panels have a surface of crushed natural stone. You can choose from 12 different colours of natural stone. Four grades: fine micro, fine, medium and coarse.



STÅLE KRISTIANSEN, REGIONAL MANAGER

All façade panels from Steni have a 60-year functional warranty. The composite construction produces an

extremely impact-resistant yet flexible façade panel. The panels are bendable down to a radius of 11,5 feet, which allows you to design organic shapes into the façade.

FACTS

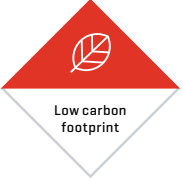
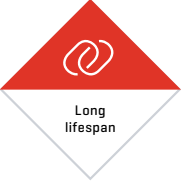
- 60-year functional warranty
- Easy fixing
- Water resistant
- Environmentally friendly
- Colourfast
- Format-flexible
- Impact resistant
- Minimal maintenance / easy cleaning

LOW GLOBAL ENVIRONMENTAL IMPACT

At Steni, we work continuously to minimise the negative impacts of our products and processes on the environment – locally and globally. We have a strong focus on continuous improvement of our carbon footprint and our products are – and will remain – market leaders in this regard.

Steni façade panels can be delivered to regular public waste treatment facilities at the end of their usable life. Steni waste is “inert”: it has no impact on the external environment.

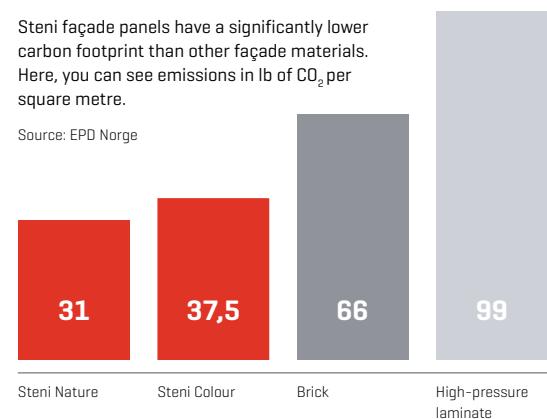
Steni façade panels have a low carbon footprint. They produce 31-37,5 lb of CO₂/m². A life-cycle analysis has been conducted for Steni façade panels and all our panels have an Environmental Product Declaration (EPD).

 <p>Low carbon footprint</p>	 <p>Long lifespan</p>	<p>ENVIRONMENTAL CLASSIFICATIONS</p> <ul style="list-style-type: none"> • EPD documents, EU (EPD Norway, Institut Bauen und Umwelt e.V.) • ECO Product, Norway • Sunda Hus, Sweden • ECO Platform, EU
---	--	--

CARBON FOOTPRINT

Steni façade panels have a significantly lower carbon footprint than other façade materials. Here, you can see emissions in lb of CO₂ per square metre.

Source: EPD Norge



NO ENVIRONMENTALLY HARMFUL SUBSTANCES

None of Steni’s products contain substances on the REACH list, on the Norwegian priority list, the Sunda Hus priority list or the Nordic Ecolabel Appendix 6.

LONG LIFESPAN

With a long lifespan and low resource consumption for maintenance, Steni panels are an environmentally sound choice. The “Life Cost Calculation” (LCC) [NS 3454:2013] of a product is a good indication of the product’s resource consumption over time. Steni products have a low LCC.



JAN ÅGE SØDERLIND, COO

We have a strong focus on the environment in our manufacturing operations. We use a number of environmentally friendly substances in our manufacturing process, and we use crushed natural stone as the core of our panels. We focus on continuous improvements, and our products do not cause any harm to the outside environment. This, combined with the long lifespan of our panels, makes Steni an environmentally friendly façade alternative.



FACTS

- Low global environmental impact
- No environmentally harmful substances
- Long lifespan
- Environmental classification

A ROBUST FAÇADE

When you choose façade panels from Steni, you get a robust façade that is designed to withstand the harsh Nordic climate.

WATER IMPERMEABLE

Steni façade panels are 100% water impermeable – which means that they can actually stand immersed in water without swelling. It also means that after cutting, you do not have to seal the edges.

MOISTURE AND FROST RESISTANT

Our panels are also moisture and frost resistant. They can withstand extreme outdoor temperatures and can be worked and bent down to -22 °F.

COLOURFAST

Steni Colour and Steni Vision have a double electron beam hardened surface, which provides excellent colour fastness over time.

IMPACT RESISTANT

Steni's façade panels are robust and impact resistant.



WASHING AND MAINTENANCE

We recommend an annual visual inspection to check whether pollution, temperature fluctuations, weather conditions or any of the building's material properties have affected the stability and appearance of the façade.

REMOVING GRAFFITI

Steni has a partnership with Blue & Green AS, which develops and manufactures cleaning products for a wide variety of surfaces. Which products you use depends on what has been used to mark the wall, and they are gentle on both cleaning personnel and the environment. Watch a video on steni.com on how to remove graffiti.



You can normally use a pressure-washer with a pressure of up to 1450 PSI on Steni panels. We recommend holding the nozzle at a distance of 8-12 inches from the panels. High-pressure washing with hot water [158 -176 °F] is normally very effective and is environmentally preferable to the use of chemicals.

WIDE VARIETY OF FORMATS

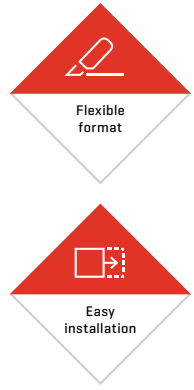
All buildings are different. Steni takes that into account. The panels are easy to install and, with a proven product life of 60 years, life-cycle costs are low.

Our continuous production process allows you to choose from a wide range of standard formats, with a width of up to 47 inches and a length of up to 138 inches. This means that there is very little wastage.



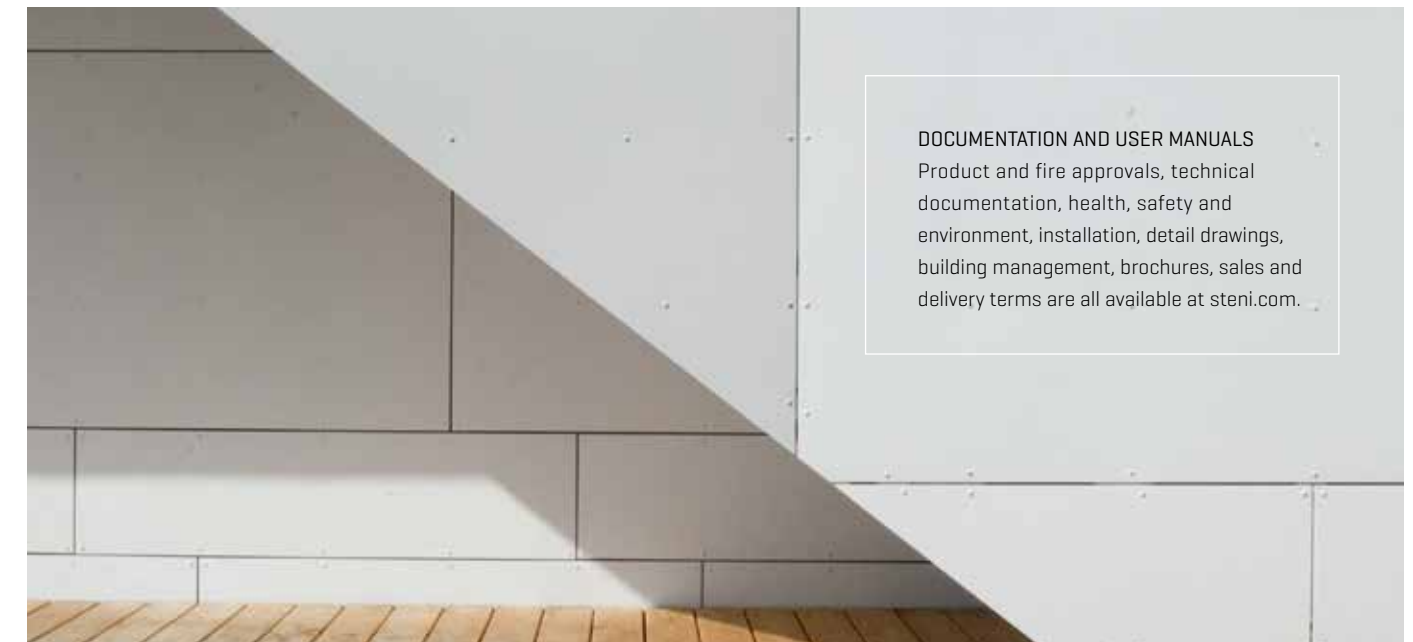
"BIM objects simplify your project and make it easy to navigate through the many challenges you may encounter. Façade panels, profile solutions and corner elements from Steni are available as downloadable BIM objects for Revit and ArchiCAD. Steni products are ideal for use in BIM because they are industrialised, scalable and prefabricated."

Instructions videos - Download modules at [bimobject.com](https://www.steni.no/hvorfor-velge-steni/bim/) : <https://www.steni.no/hvorfor-velge-steni/bim/>

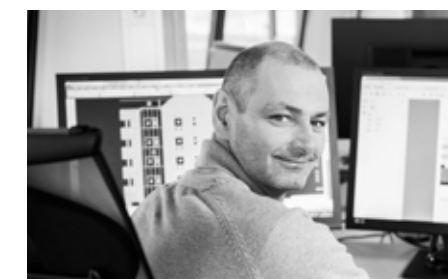


EASY FIXING

Façade panels from Steni are easy to fix. Our façade panels are fixed as ventilated cladding. You can find detailed installation instructions at [steni.com](https://www.steni.com).



DOCUMENTATION AND USER MANUALS
Product and fire approvals, technical documentation, health, safety and environment, installation, detail drawings, building management, brochures, sales and delivery terms are all available at [steni.com](https://www.steni.com).



TOM KRISTIAN HVAAL, TECHNICAL SUPPORT DEPARTMENT

We are committed to finding good solutions together with you as our

customer. We contribute our expertise to optimise formats and find the best combinations. This minimises wastage and costs, and facilitates efficient logistics and installation on site.

GUARANTEED LONG LIFESPAN
 Façade panels from Steni have a 60-year functional warranty. That means minimal maintenance on the finished building – just simple cleaning – and thus lower costs throughout the entire lifespan of the building.

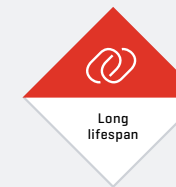


FAÇADE PANELS THAT PAY OFF!

Price is not just purchase price. Life Cycle Costs – LCC – are the costs incurred for a building from early planning to the end of its lifespan.

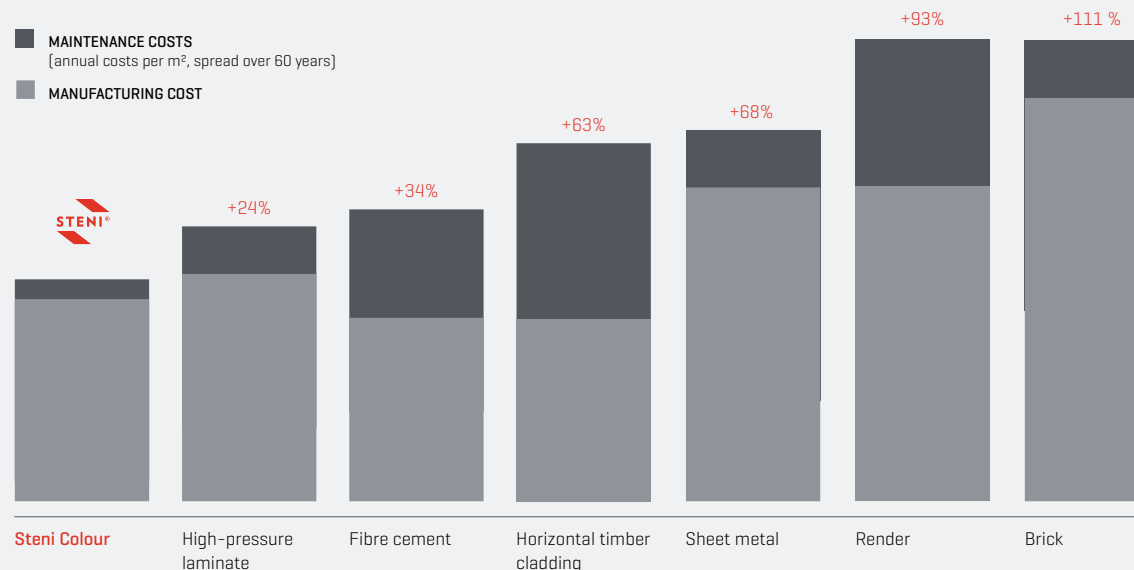
When you buy façade panels from Steni, we offer you a range of services to help you with logistics and installation. You can order panels in custom formats. Façade panels can be pre-drilled and we offer MM packaging (materials management). All this makes work on the construction site easier. You save valuable time and money – and with minimal wastage.

At Skullerud in Oslo, Boligbygg has renovated the housing complex into pleasant apartments with bright, exciting façades and green grounds.



LIFE CYCLE CALCULATION

Additional percentage compared to Steni Colour



Source: Byggsanalyse AS (NS 3454:2013)

UNIQUE CORNER SOLUTIONS

Steni is the only supplier on the market to offer such a wide range of sizes and corner solutions.

Steni develops customised solutions together with our customers, and we offer moulded L- and U-shaped elements in a variety of angles for all our products and finishes. Curved and corner elements provide exciting opportunities and produce seamless transitions that give aesthetic beauty to a building.

PLAY WITH ANGLES

The TVNorge building in Nydalen in Oslo is a modern and attractive building, where the architect and Steni have played with angles and columns with razor-sharp edges.

“No other panel solutions can be delivered with these options,” says Ragnvald Halset, architect at NYARK. He is responsible for the architecture of many of the modern façades that adorn the Nydalen business park.

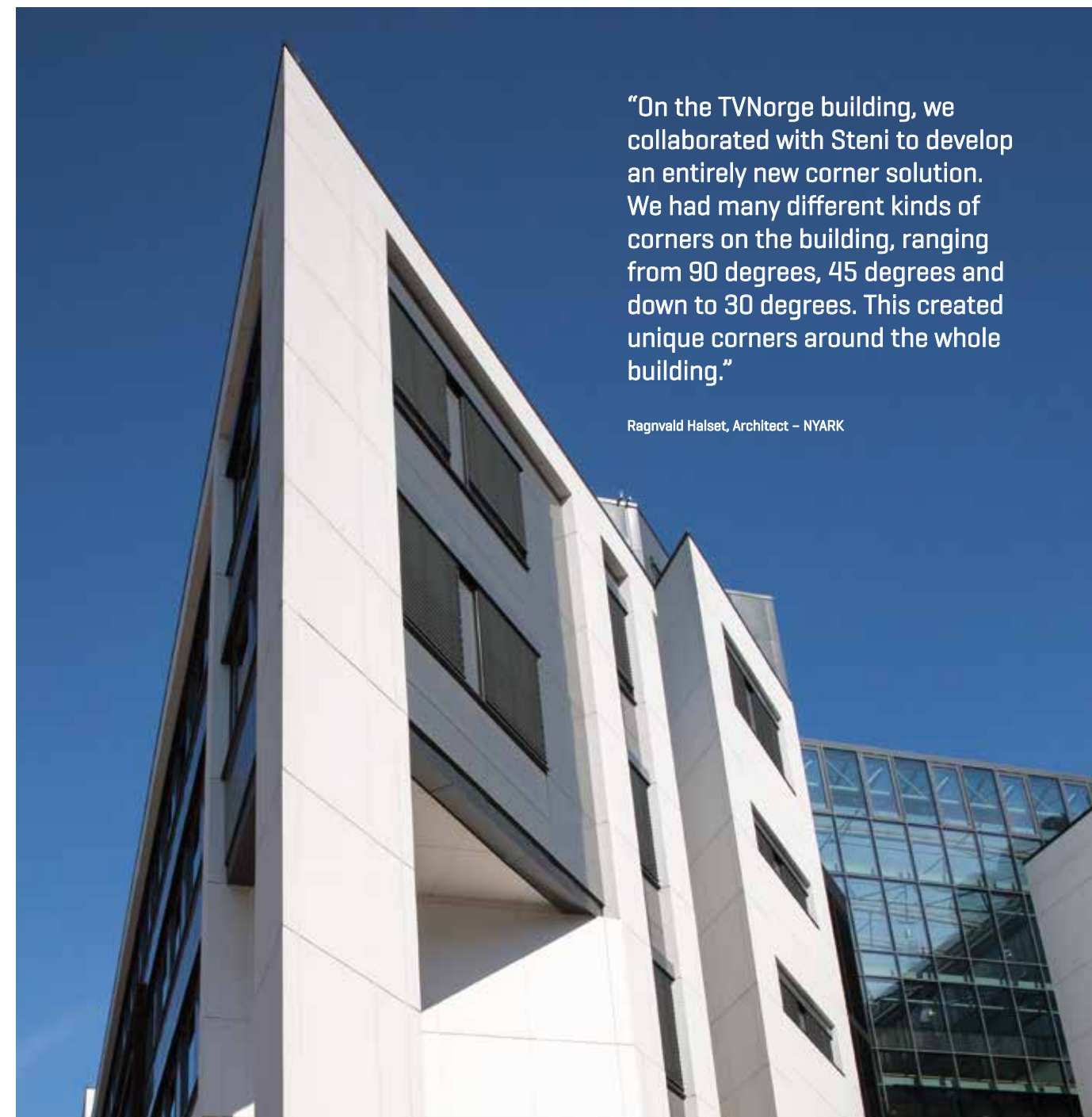
He praises the collaboration with Steni in the work to further develop the product, and he believes that the composite material used today has such a high-quality gloss that it can be a good replacement for glass.

“With these façade panels, the architect can play – not just with angles, but with colours, colour combinations and gloss levels – and infuse the building with their own personal style.”

Detail from a private home in Sandefjord, Norway



Curved solutions and corner elements in many different angles invite creative design solutions and complement the façade.

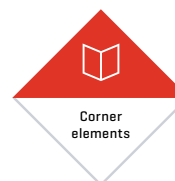


“On the TVNorge building, we collaborated with Steni to develop an entirely new corner solution. We had many different kinds of corners on the building, ranging from 90 degrees, 45 degrees and down to 30 degrees. This created unique corners around the whole building.”

Ragnvald Halset, Architect – NYARK

PROJECT

Location: TVNorge building / Oslo, Norway
 Architect: Ragnvald Halset, NYARK
 Contractor: Vedal
 Client: Avantor
 Product: Steni Colour



CORNER ELEMENTS

- Curved solutions and corner elements in many different angles
- 60-year functional warranty
- Easy installation
- Water resistant
- Environmentally friendly
- Colourfast
- Format-flexible
- Impact resistant
- Minimal maintenance / easy cleaning

KENNETH HAUGEN,
REGIONAL MANAGER

Our wide selection of L- and U-shaped elements in a variety of angles encourages

creative design solutions. Our façade panels are bendable down to a radius of 138 inches, which allows exciting options. We would love to discuss façades with you – we can find the best solutions together!

COLOUR

PLAY WITH COLOUR

With Steni Colour façade panels, you can play with colours, colour combinations and surfaces and infuse the building with your personal style.

You can choose from 80 standard colours and three gloss levels, or select a custom colour based on NCS or RAL.



FACTS ABOUT COLOUR

- 80 standard colours
- Three gloss levels
- Can be installed at any time of year
- Water resistant
- Environmentally friendly
- Colourfast
- Format-flexible
- Impact resistant
- Minimal maintenance / easy cleaning
- 60-year functional warranty

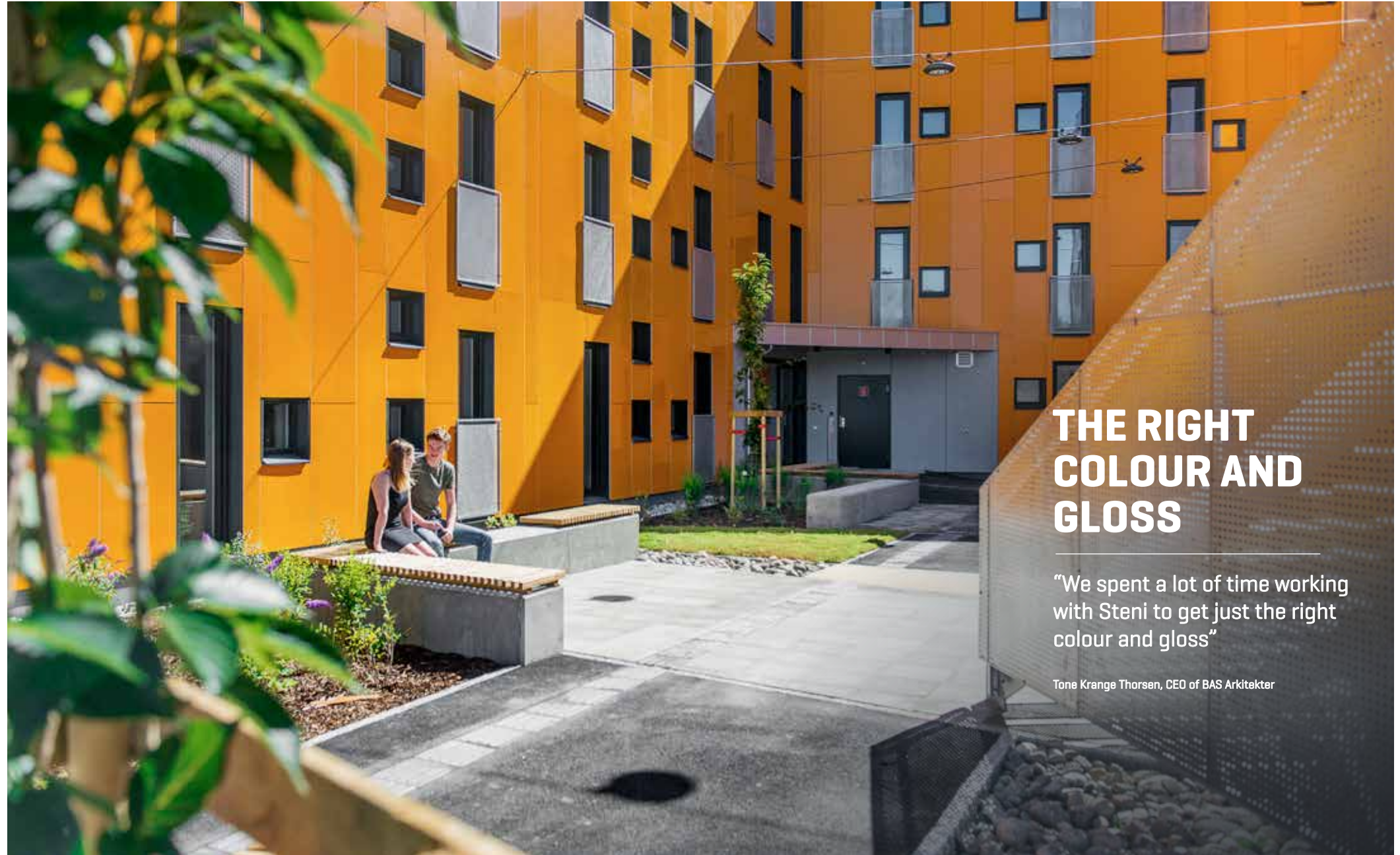
COLOURFUL LEARNING ENVIRONMENT

Location: Bjølstad student housing complex / Fredrikstad, Norway
 Architect: BAS Arkitekter
 Property developer: Ove Skår
 Client: Student Welfare Organisation in Østfold (SIØ)
 Product: Steni Colour

At the Bjølstad student housing complex in Fredrikstad, the orange Steni panels generate both interest and debate.

“We spent a lot of time working with Steni to get just the right colour and gloss,” says Tone Krange Thorsen, CEO of BAS Arkitekter, who were responsible for designing the Bjølstad student housing complex. “There was a lot of trial and error before we landed on the final solution, something approaching the ochre colour Daffodil Yellow. Steni produced a colour with the NCS code S1080-Y30R in 50/50 half matt and high gloss.”

Thorsen is very pleased with the result and explains that orange is the signature colour of the Student Welfare Organisation in Østfold. Aside from that, however, it was important to create a building that will stand the test of time, since student housing has such a high turnover of residents. From experience, they know that means rough use. The Student Welfare Organisation has low maintenance budgets, which is why they selected Steni façade panels combined with cladding in ash-treated ore-pine that was treated with iron vitriol.



THE RIGHT COLOUR AND GLOSS

“We spent a lot of time working with Steni to get just the right colour and gloss”

Tone Krange Thorsen, CEO of BAS Arkitekter

The Bjølstad student housing complex in Fredrikstad has façade panels in the Student Welfare Organisation’s signature orange colour.



Orange is the signature colour of the Student Welfare Organisation in Østfold, so it was natural to use orange on the student housing complex in Fredrikstad.



Photo: Erik Burås

COLOURS



S 1080-Y30R
 Half matt/
 High gloss

Orange façade panels combined with ash-treated cladding in ore-pine.

LIFESPAN WAS DECISIVE

Location: Samsøvej assisted living centre in Holbæk, Denmark
 Architect: Kullegaard AS
 Contractor: STB Byg
 Client: Holbæk Municipality and DOMEA
 Product: Steni Colour

In order to create a better setting for both residents and staff, the new assisted living centre in Holbæk in Denmark was formed as a figure eight, clad with black façade panels from Steni.

“The client wanted the façade cladding that had the longest lifespan,” says architect Kasper Kullegaard. “The choice naturally fell on Steni Colour. It also gave us the opportunity to play with two different shades of the dark colour. The façade is sharply modular, so there is nowhere on the façade with cuts or divisions in the individual panels. The use of different shades creates the impression of depth and emphasises the iconic and curved shape of the building.”

FACTS

The Samsøvej assisted living centre is 5,600 square metres in size and is shaped as a figure eight. The geometric shape of the building reduces the length of the hallways, so that the distances are shorter for staff as they move around the building. The figure eight also creates a positive environment and sense of security for both residents and staff.



Photo: Kullegaard A/S



ICONIC FORM

“The use of two different shades creates the impression of depth and emphasises the iconic and curved shape of the building.”

Kasper Kullegaard, architect and partner at Kullegaard AS

The Samsøvej assisted living centre in Holbæk in Denmark is formed as a figure eight. The façade is clad in Steni Colour, which was selected thanks to its long lifespan.

Photo: Per Sørensen

COLOURS

SN 8900 S 9000-N M	NCS S 8500-N M	NCS S 4502-B M	SN 8020 S 3000-N M



Curved panels give a unique impression.

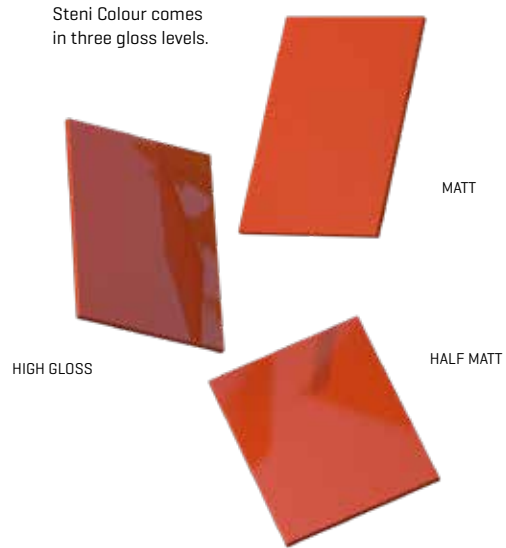


The inside of the figure eight encloses sunny and sheltered courtyards for residents.

STENI COLOUR

Steni Colour is installed as ventilated cladding and can be installed at any time of year, irrespective of the temperature and weather.

Steni façade panels are 100% water impermeable, which means that they can remain submerged in water. They require minimal maintenance and can be cleaned with most cleaning agents used to wash houses. With the proper cleaning agents, you can also remove graffiti without ruining the panels (see page 9). You can also use a pressure-washer on the panels.



Havbo, Sønderborg, Denmark.



Henius House, Ålborg, Denmark.



The façade panels are water and frost resistant.



ANNE GRY ALLUM,
STENI LABORATORY

We continuously work with testing, checking and correcting colours to

ensure that the end result is always optimal. If you want an individually customised colour, we will help you get the colour you want, and ensure that the quality and durability will be perfect.

VISION

YOUR OWN UNIQUE FAÇADE

FACTS ABOUT VISION

- 60-year functional warranty
- A wealth of opportunities for creative expression
- Easy installation
- Water resistant
- Environmentally friendly
- Colourfast
- Format-flexible
- Impact resistant
- Minimal maintenance / easy cleaning

With Steni Vision, you can create your very own façade design. Your design and decoration options are limitless: use your own photos, illustrations and/or other motifs – you are only limited by your imagination.

NICKBY HEART

Location: Nickby Heart / Nickby, Finland
 Architect: ARK-house arkkitehdit Oy
 Illustration/graphics: Aimo Katajamäki
 Contractor: Hartela Oy
 Client: Municipality of Sipoo
 Product: Steni Colour and Steni Vision

In Nickby, about 35 km north-east of Finland's capital Helsinki, we find Nickby Heart – a school that used Steni Colour and Steni Vision to create a unique façade design.

The school was designed by the architect Pentti Kareoja from the Finnish architectural firm ARK-house arkkitehdit Oy. The colours, graphics and design of the building are intended to contribute to a positive learning environment for the students, where they experience well-being, security and belonging. Nickby Heart is shaped like a star. The common administrative functions are located in the middle, while the teaching areas are out in the arms of the star.

"Nickby is a small town, and the school has a central place in the urban landscape. That's why we felt it was important to give the building an expression – through its shape and façade – that covered the educational needs, while also generating pride and identity for both the students and the whole town," says architect Pentti Kareoja.

On the exterior, the arms of the star create pleasant courtyards. Since every façade is clad in a different colour, each courtyard between the arms of the star has its own distinctive atmosphere. The colourful impression is balanced by the black details at the tips of the star, as well as by the dark graphics. Here we see playful animal and human figures.

The graphic designer Aimo Katajamäki created this vibrant façade. The piece is called "The Flow of Knowledge and Acrobatics of Life". The inspiration for the line structure in the graphic comes from the fairy tale "Puss in Boots".

FACTS

Nickby Heart has both a Swedish and a Finnish part – altogether, 740 students attend the school. The planning of part 2 is already underway and, when construction is completed in 2020, the school will house around 1,100 students.













DISTINCTIVE MOOD

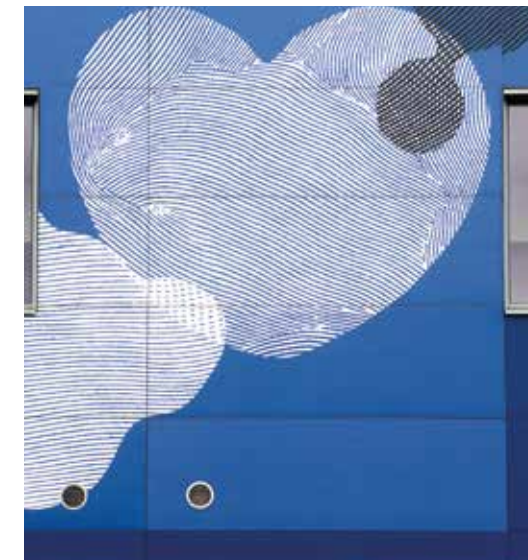
Designing a school is a major and important challenge for an architect. The task is to give positive associations to the future. Using colour and art, we build the identity of the building, we upgrade the environment for everyone – and, not least, we contribute to lasting memories for the children later in life.

Pentti Kareoja, ARK-house arkkitehdit Oy

COLOURS

				
SN 8001 Half matt	NCS S 2703- B62G Half matt/ High gloss	SN 7534 Half matt/ High gloss	SN 9301 Half matt/ High gloss	NCS S 2169- G52Y Half matt/ High gloss
				
NCS S 1176- Y57R Half matt/ High gloss	NCS S 2364- Y64R Half matt/ High gloss	NCS S 1071- Y42R Half matt/ High gloss	NCS S 2464- Y31R Half matt/ High gloss	NCS S 2851- B42G Half matt/ High gloss

Details from the orange and blue courtyards. The artwork was designed by the graphic designer Aimo Katajamäki.



ARCTIC SALMON CENTER

Location: Skutvik in Nordland
 Architect: Norconsult AS
 Contractor: Thore Magnussen og Sønn [TMS]
 Client: Cermaq
 Product: Steni Vision

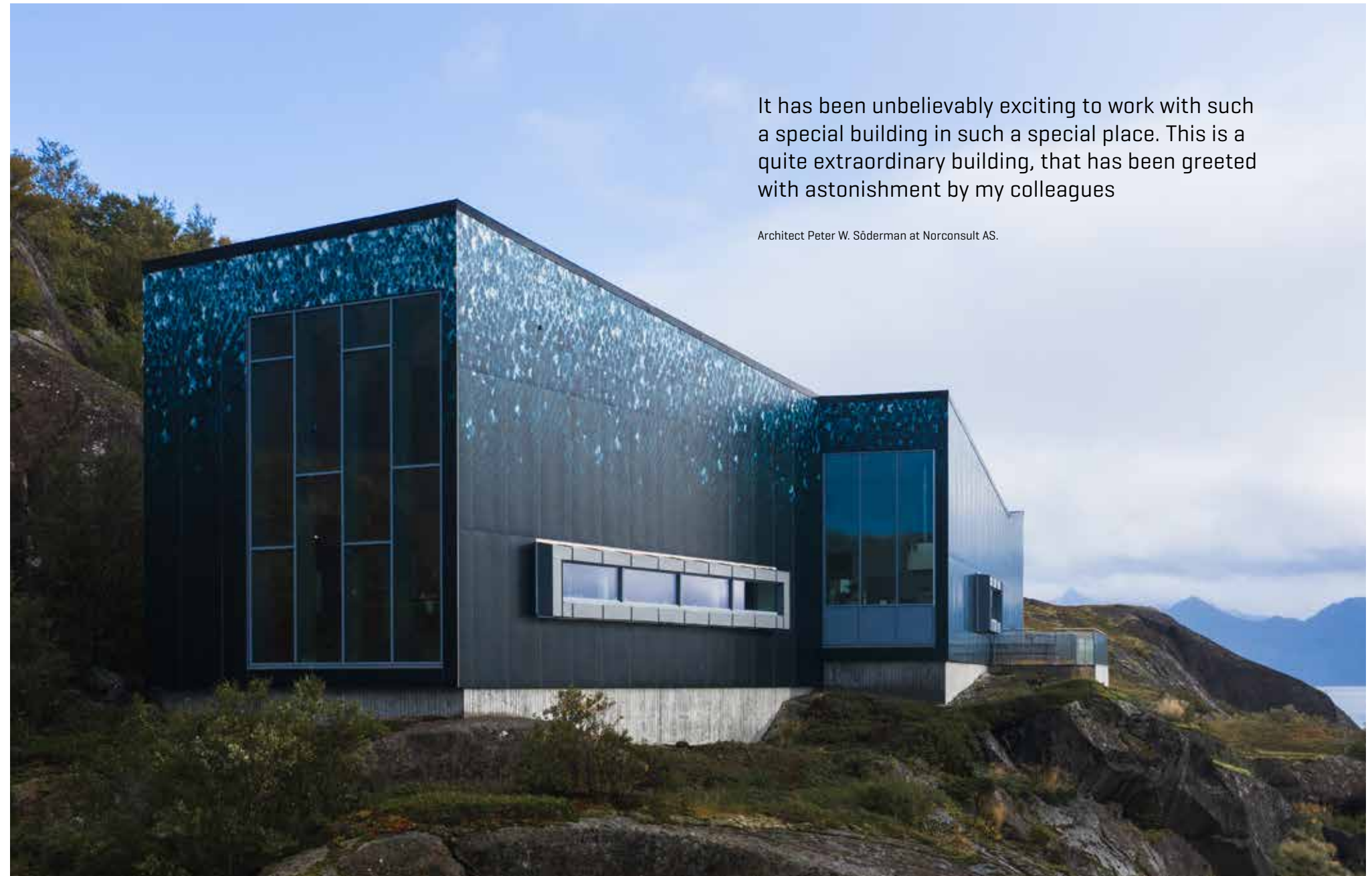
The building rises from a rock face jutting up from the ocean at Skutvik in Nordland. Steni Vision façade panels give the Arctic Salmon Center a quite unique expression that is really getting noticed.

"We chose Vision panels from Steni due to the printing possibilities – we could project an exciting and quite subtle print onto a large surface. The client wanted to have an expressive building that reflected what they are, which is of course an experience centre for the fishing industry," comments architect Peter W. Söderman at Norconsult AS. Söderman adds that the 60-year warranty was also an important factor in their choice.

It's an incredibly harsh location, exposed to incessant sea foam, wind and snow, and the building is also not easy to access. This made it really important to choose a robust façade material that could go long periods without maintenance.

The building has a unique expression, and blends in with the vulnerable landscape. The architects have done an outstanding job, with, for example, the colour-shading on the façade panels – which downplay the building's height and volume.

Steni's printing technology makes it possible for architects, artists and illustrators to project their visions in an almost infinite scope. The Arctic Salmon Center is an outstanding example of this – the building has really become an elegant landmark on the Norwegian coast!



It has been unbelievably exciting to work with such a special building in such a special place. This is a quite extraordinary building, that has been greeted with astonishment by my colleagues

Architect Peter W. Söderman at Norconsult AS.

Steni façade panels can withstand all the elements



JAN TERJE NIELSEN,
 CHIEF COMMUNICATION &
 BRAND MANAGER

We are really proud to have been chosen as a supplier to a project that has been as thoroughly thought out from an architectural standpoint.



The print patterns on the façade panels create an illusion of salmon scales.

FACTS

The print pattern on the façade panels creates an illusion of salmon scales, while the contrasting shading helps to downplay the building's height and merge it into the landscape.

STENI VISION

Steni Vision is perfect for creating optical illusions, or emphasising a building's identity.

You can integrate information into the façade, or use Vision to actually integrate the building into the surrounding environment.

Steni Vision can be used in combination with Steni Colour or with other products from Steni. Just like all our other façade panels, Steni Vision requires minimal maintenance and can be cleaned with most cleaning agents used to wash houses.

GLOSS LEVELS



Steni Vision is available in three gloss levels.

MATT

HALF MATT

HIGH GLOSS



ILLUSION

Things do not always look the same at a distance – or up close. When you use Steni Vision, you can give the building an appearance from a distance that will change when you get close.



INTEGRATION

If you want your building to blend in as a natural part of its surroundings, Steni Vision gives you a unique opportunity. With façade panels with printed images of nature, the colours or other aspects of the surrounding environment, your building will integrate perfectly into its surroundings.



IDENTITY

With Steni Vision, you can give your building a uniquely personal expression. Here, at Newton Flight Academy in Bodø, illustrations related to aviation have been used on the façade panels on the school building, giving it a clear and unique identity.



INFORMATION

Steni Vision can be used to replace regular information signs. With a touch of colour and clear text, there is no doubt about which building you have arrived at.

NATURE

A NATURAL EXPRESSION

Steni Nature façade panels are fibreglass-reinforced polymer composite panels with a core of crushed limestone. The surface is covered with crushed natural stone.

FACTS ABOUT NATURE

- 60-year functional warranty
- Maintenance-free / easy cleaning
- 14 natural stone colours and four grades of stone
- Easy installation
- Water resistant
- Environmentally friendly
- Colourfast
- Format-flexible
- Impact resistant

THE LØREN DISTRICT

Location: Løren District / Oslo, Norway
 Architect: AS Selvaagbygg
 Contractor: AS Selvaagbygg
 Client: Selvaag Bolig
 Product: Steni Nature

Blocks of flats are exposed to heavy wear – and rough “use” – by both people and the environment. A façade must be able to stand up to all of that.

For the façades of the buildings in the Løren district of Oslo, the architect chose a combination of natural stone and wood. Steni Nature façade panels, with a surface of crushed natural stone, are a robust and aesthetically pleasing solution that stays beautiful year after year. The façade is also easy to wash – and it can withstand both play and ball games.

The façade panels of light natural stone with wooden inlays have lovely lines, and nicely set off the building’s many sections.



The Løren district, with its façade of Steni Nature façade panels and natural wood, is a pleasant residential area.

COLOUR



SN20
Secret
Blend

FACTS

The client decided to use Steni Nature instead of render. This simplified installation and much reduced the overall cost of the building.

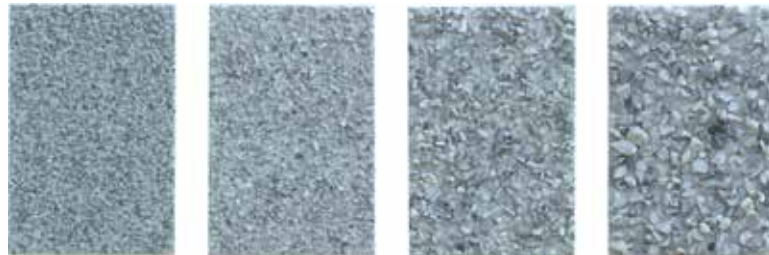
Steni Nature works well in combination with other materials.



STENI NATURE

Steni Nature is available in 12 different natural stone colours and four grades of stone: fine micro, fine, medium and coarse. The product is perfect for both new buildings and renovation projects.

STONE GRADES



FINE MICRO FINE MEDIUM COARSE



You can also use Steni Nature indoors. This is an example from the Comfort Hotel Runway at Gardermoen.



A Texaco service station in Belgium has used Steni Nature for its façade.

Photo: Ilank Pienstet / Abscis Architecten

STENI'S WORLD OF SURFACES

COLOURS

Colours create moods: blue for calm, yellow for joy, red for energy, green for harmony – the whole spectrum. Standard colours or a shade suited to your personality. Bright colours, soft colours, coordinated tones, patterns and markings, or combined with other materials – the universe of colour is yours to explore!

GLOSS

Gloss defines how the light interacts with the surfaces: matt, half matt or high gloss – a soft, harmonious idiom, or surfaces that shine like mother-of-pearl? Different degrees of gloss can subtly alter colours and visual impressions. Playing with gloss levels adds life and personality.

TEXTURE

Texture adds character. A hand stroking a coarse, stony crag and a smooth rock – feel the difference! Crushed natural stone, from fine grain to coarse structure in Mother Nature's own shades. A rough surface that adds substance, or a soft, light expression?

PRINT

Your own personal signature: graphic elements, drawings, photos and patterns create your own bespoke expression. Build identity and reflect function and history. Identity, illusion, integration, information – aesthetics never seen before.



COLOURS

FROM SKY TO EARTH

With Steni façade panels, you can play with colours, colour combinations and surfaces and infuse the building with your personal style. Steni colour comes in 60 standard colours, most in three gloss levels – or you can select a custom colour based on NCS/RAL. 12 natural stone colours and four grades of stone with Steni Nature. Your own image, pattern or illustration with Steni Vision. Or maybe you want to combine them all? The core of all Steni panels is the same – so you can just mix and match the surfaces. The choice is yours!



BASE COLOUR

 SN 8010 NCS S 0502-Y Stocked: M-HM	 SN 9500 NCS S 1002-Y	 SN 9205 NCS S 1502-Y	 SN 9501 NCS S 2002-G50Y	 SN 8671 NCS S 3502-Y	 SN 8672 NCS S 4502-Y	 SN 8673 NCS S 5502-Y	 SN 9502 NCS S 7502-Y	 SN 9503 NCS S 7502-B	 SN 9504 NCS S 8005-R20B
 SN 8011 NCS S 1005-Y20R	 SN 8013 NCS S 1002-G50Y	 SN 9505 NCS 1604-Y22R	 SN 8661 NCS S 3502-G	 SN 9506 NCS S 3010-G90Y	 SN 4353 NCS S 3010-Y50R	 SN 9508 NCS S 4005-Y20R	 SN 9509 NCS S 4005-G80Y	 SN 9510 NCS S 4010-Y10R	 SN 9511 NCS S 4005-Y50R
 SN 4072 NCS S 2010-Y10R	 SN 3413 NCS S 1020-Y10R	 SN 9512 NCS S 2020-Y10R	 SN 9513 NCS S 2030-Y10R	 SN 9514 NCS S 2020-Y20R	 SN 9515 NCS S 3020-Y20R	 SN 9516 NCS S 4020-Y20R	 SN 9517 NCS S 2030-Y20R	 SN 9518 NCS S 3030-Y30R	 SN 9523 NCS S 4020-Y40R
 SN 9520 NCS S 2005-Y20R	 SN 9521 NCS 1704-Y50R	 SN 9522 NCS S 1505-Y30R	 SN 4012 NCS S 2010-Y30R	 SN 4500 NCS S 2020-Y40R	 SN 4357 NCS S 3030-Y50R	 SN 9524 NCS 3917-Y66R	 SN 9525 NCS S 4030-Y60R	 SN 9526 NCS S 5020-Y50R	 SN 9532 NCS 5010-Y82R
 SN 9527 NCS 2503-Y80R	 SN 9528 NCS 2509-Y77R	 SN 9507 NCS S 3010-Y70R	 SN 9529 NCS 3208-Y77R	 SN 9530 NCS S 4010-Y70R	 SN 9531 NCS S 4020-Y80R	 SN 9533 NCS S 5020-Y80R	 SN 9534 NCS S 5030-Y80R	 SN 2008 NCS S 4550-Y80B	 SN 9535 NCS S 6020-Y80R
 SN 9536 NCS S 2005-G60Y	 SN 9308 NCS S 2010-G30Y	 SN 9537 NCS S 3010-G50Y	 SN 6362 NCS S 4010-G50Y	 SN 9307 NCS S 5010-G30Y	 SN 9538 NCS 5317-G40Y	 SN 9539 NCS 2703-B02G	 SN 9540 NCS 3605-R99B	 SN 7020 NCS S 5010-R90B	 SN 9541 NCS 5217-R95B

SIGNAL COLOURS

 SN 9103* NCS S 7020-R	 SN 9100* NCS S 1580-Y90R	 SN 9101* NCS S 2070-Y60R	 SN 9102* NCS 0876-Y44R	 SN 9519* NCS S 3040-Y20R	 SN 9200* NCS S 1070-Y10R	 SN 9302* NCS S 0565-G50Y	 SN 9300* NCS S 1070-G30Y	 SN 9304* NCS S 5040-B30G	 SN 9303* NCS S 6530-B30G
---	---	---	--	---	---	---	---	---	---

NEUTRAL GREYSCALE

 SN 8001 NCS S 0500-N Stocked: M-HM-HG	 SN 8002 NCS S 1000-N Stocked: M-HM	 SN 8003 NCS S 2000-N Stocked: M	 SN 8020 NCS S 3000-N Stocked: M	 SN 8004 NCS S 4000-N	 SN 8005 NCS S 5000-N	 SN 8006 NCS S 6000-N	 SN 8007 NCS S 7000-N	 SN 8008 NCS S 8000-N Stocked: M-HM	 SN 8900 NCS S 9000-N Stocked: M-HM
--	--	---	--	---	---	---	---	--	--

○ The samples indicated with a white dot have a light core colour as standard. ● The samples indicated with a dark dot have a dark core colour as standard.

*Signal colours cannot be supplied in matt gloss [M]; only in half matt [HM] and high gloss [HG].

Colours that have dark core colour as standard can also be delivered with a light core colour on request.

Printed colours may deviate slightly from the actual colours. Please request a product sample.

STENI COLOUR REUSE

The façade system designed for reuse



Reuse of building materials is the current and future answer to several global environmental challenges. Steni Colour Reuse is a façade system designed to be used repeatedly.

Our façade panels are environmentally friendly and have an expected lifetime of more than 100 years which makes them a good choice for the environment and sustainability. Now we have taken the step further by launching Steni Colour Reuse, a set of standardised façade panels that systemise reuse. These are façade panels that can be reused directly, when they have finished their service in one building.

Steni Colour Reuse comes with a written 60-year functional warranty.

STENI COLOUR REUSE PRODUCTION FORMATS [mm]

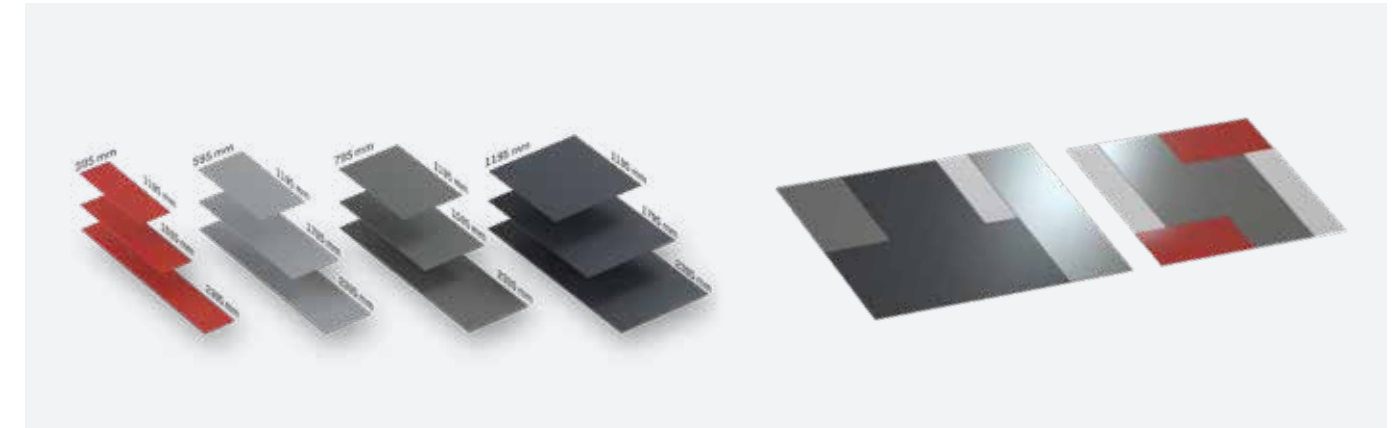
Minimum 10 m² per division.

Standard panel divisions*	Standard production length
395 + 395 + 395	1195 , 1595 , 2395
595 + 595	1195 , 1795 , 2395
795 + 395	1195 , 1595 , 2395
1195**	1195 , 1795 , 2395

* All panels split from the same full-width panel must be of the same length.

**No minimum quantity for 1195 mm width.

PROPERTIES OF STENI COLOR REUSE



SUSTAINABLE OPPORTUNITIES

A used Steni facade panel can be re-used as it is by adapting the boring on the new facade to the drill pattern on the used facade panel (standard c/c 400 mm or c/c 600 mm).

ROOM FOR FLEXIBILITY AND CREATIVITY

Steni Colour Reuse comes in 12 different panel sizes corresponding to the mindset behind Lego®. The colour selection is the same as for Steni Colour, i.e. 80 standard colours, of which 70 can be supplied in three gloss levels; M, HM and HG and 10 can be supplied in two gloss levels; HM and HG.

EASY TO ASSEMBLE AND DISASSEMBLE

Steni façade panels are robust and impact-resistant. They can be easily assembled, disassembled, and reassembled again - several times - without being broken in the processes.

STANDARDIZED VELCRO PATTERN

Steni Colour Reuse is available in 6 formats pre-drilled with standard drilling patterns adapted to c/c 400 mm and 6 formats pre-drilled with standard drilling patterns adapted to c/c 600 mm. The formats and drilling patterns are adapted for both horizontal and vertical mounting.

FROM LINEAR TO CIRCULAR ECONOMY

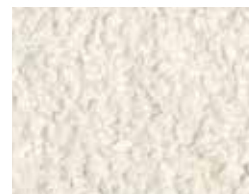
At Steni we recognize the importance of contributing to a sustainable circular economy. One of our key features is durability and we want to send as little material as possible out of the cycle.

This is why, after reaching the end of one cycle, it is our goal that 100% of Steni Colour Reuse will be reused in either new projects or renovations.



Book a project meeting [follow the QR code].

NATURE



SN 500 EXTRA WHITE
Standard: F



SN 100 WHISPER WHITE
Standard: F, M, C



SN 20 SECRET BLEND
Standard: F



SN 106 NORDIC LIGHT
Standard: F, M



SN 140 SIENNA
Standard: F, M, C



SN 503 ICE AGE
Standard: C



SN 320 WHITE LINEN
Standard: M



SN 117 URBAN GREY
Standard: F, M, C



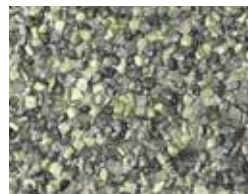
SN 315 GRANITE
Standard: F



SN 111 NORDIC SAND
Standard: M



SN 130 HYDRO
Standard: M



SN 502 SCANDINAVIAN FOREST
Standard: M



SN 190 DUSTY RED MIX
Standard: FM, M



SN 305 CARBON
Standard: FM, M

STONE GRADE

FM: Fine Micro [0,8-1,8mm]

F: Fine [1-3mm]

M: Medium [3-5mm]

C: Coarse [5-8mm]

NATURE GLASS



SN 604 WHITE GLASS
Standard: F, M



SN 605 MIXED GLASS
Standard: F, M

VISION

Steni Vision Standard - featured collection



ACACIA BROWN
Standard: M



OAK NATURAL
Standard: M



PINE NATURAL
Standard: M



POPLAR GREY
Standard: M



ALUMINIUM NATURAL
Standard: HM



COPPER GREEN
Standard: M



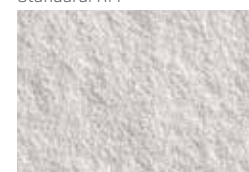
CORTEN RUSTY
Standard: M



STEEL GREY
Standard: HM



TRAVERTINE NATURAL
Standard: M



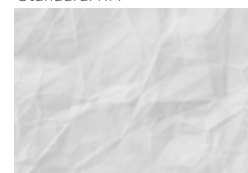
MARBLE WHITE
Standard: M



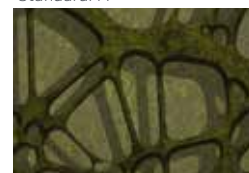
GRANITE MIX
Standard: HM



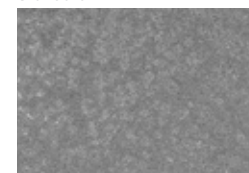
CONCRETE LIGHT
Standard: M



CURLLED LIGHT
Standard: M



LAYERS GREEN
Standard: M



SPARKLE GREY
Standard: HM



The entire Steni Vision Standard series is available as samples in 10x15 cm. Featured collection with selected decors is available as samples in 17x24 cm. The image is not 1:1 size. The size of the pattern depends on use. Printed colour may deviate from the actual colour - ask for sample.

Steni Vision Standard - complete collection



ACACIA PALE
Standard: M



ACACIA NATURAL
Standard: M



ACACIA GREY
Standard: M



ACACIA BROWN
Standard: M



OAK WHITE
Standard: M



OAK NATURAL
Standard: M



OAK DARK
Standard: M



OAK GREY
Standard: M



PINE GREY
Standard: M



PINE BROWN
Standard: M



PINE NATURAL
Standard: M



PINE WHITE
Standard: M



POPLAR LIGHT
Standard: M



POPLAR GREY
Standard: M



POPLAR BROWN
Standard: M



POPLAR DARK
Standard: M



ALUMINIUM BROWN
Standard: HM



ALUMINIUM GOLD
Standard: HM



ALUMINIUM AGED
Standard: HM



ALUMINIUM NATURAL
Standard: HM



COPPER GREEN
Standard: M



COPPER AGED
Standard: M



COPPER NATURAL
Standard: M



COPPER BROWN
Standard: M



CORTEN LIGHT
Standard: M



CORTEN YELLOW
Standard: M



CORTEN ORANGE
Standard: M



CORTEN RUSTY
Standard: M



STEEL LIGHT
Standard: HM



STEEL GREY
Standard: HM



STEEL AGED
Standard: HM



STEEL DARK
Standard: HM



TRAVERTINE DARK
Standard: M



TRAVERTINE BEIGE
Standard: M



TRAVERTINE LIGHT
Standard: M



TRAVERTINE NATURAL
Standard: M



MARBLE WHITE
Standard: M



MARBLE GREY
Standard: M



MARBLE BEIGE
Standard: M



MARBLE DARK
Standard: M



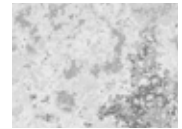
GRANITE DARK
Standard: HM



GRANITE BEIGE
Standard: HM



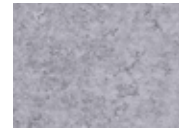
GRANITE MIX
Standard: HM



GRANITE LIGHT
Standard: HM



CONCRETE LIGHT
Standard: M



CONCRETE GREY
Standard: M



CONCRETE BROWN
Standard: M



CONCRETE GREEN
Standard: M



CURLLED LIGHT
Standard: M



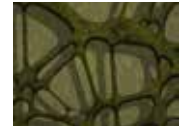
CURLLED GREY
Standard: M



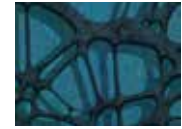
CURLLED DARK
Standard: M



CURLLED BROWN
Standard: M



LAYERS GREEN
Standard: M



LAYERS BLUE
Standard: M



LAYERS RUSTY
Standard: M



LAYERS PURPLE
Standard: M



SPARKLE DARK
Standard: HM



SPARKLE BLUE
Standard: HM



SPARKLE GREY
Standard: HM



SPARKLE BEIGE
Standard: HM



ZEBRANO GREY
Standard: HM



ZEBRANO BROWN
Standard: HM



ZEBRANO NATURAL
Standard: HM



ZEBRANO GREEN
Standard: HM

The entire Steni Vision Standard series is available as samples in 10x15 cm. Featured collection with selected decors is available as samples in 17x24 cm. The image is not 1:1 size. The size of the pattern depends on use. Printed colour may deviate from the actual colour - ask for sample.

LASTING EXPRESSIONS

steni.com

Steni delivers the market's most cost-effective façade solutions with unique and enduring architectural expressions. With our world of surfaces, you can design your façade exactly the way you want it. When you choose Steni façades, you get a product with a long lifespan, low life-cycle costs and excellent logistics solutions – along with a sustainable environmental impact.

Since our establishment in 1965, we have delivered more than 50 million square metres of façade panels around the world.